

RULON INTERNATIONAL  
2000 Ring Way  
St. Augustine, FL 32092

(904) 584-1400  
info @ rulonco.com

www.rulonco.com

PROJECT:

TITLE:

Aluratone 700 Panel - Isometric  
View

ISSUE DATE:

REVISION DATE:

MAR/31/2022

DRAWN BY:

CAP

CHECKED BY:

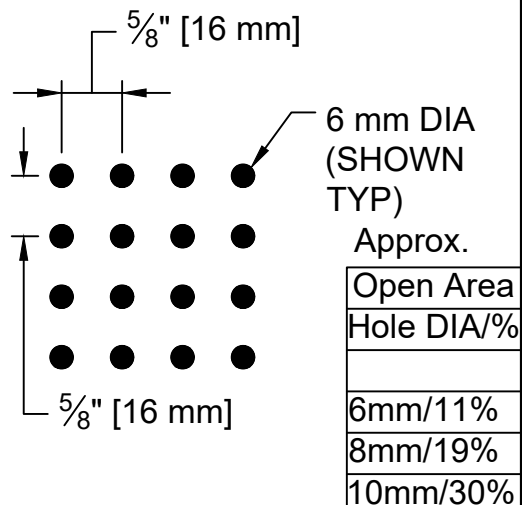
TDA

PROJECT NUMBER:

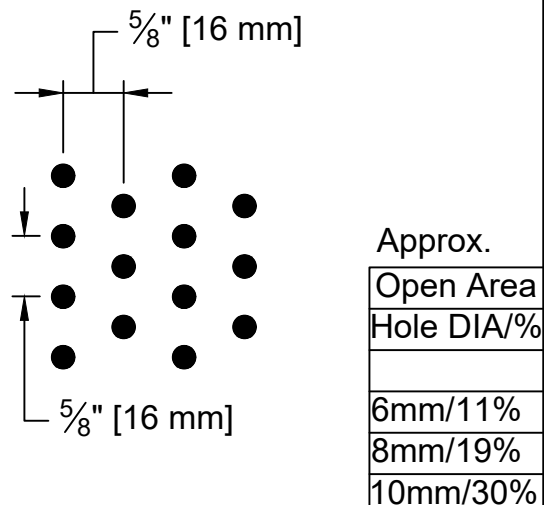
DRAWING NUMBER:

A7AS0007

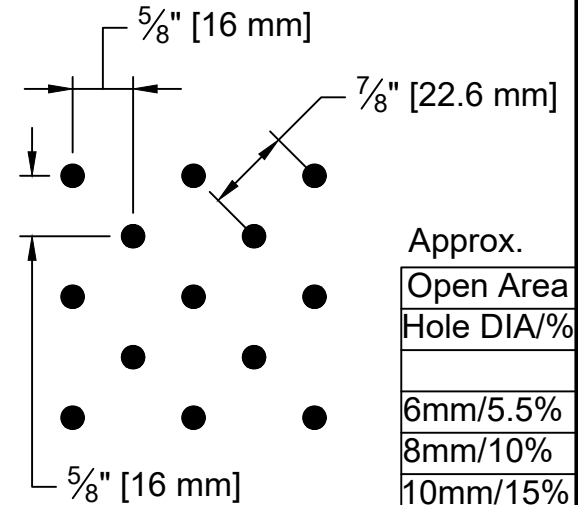
### 16mm Straight Centers



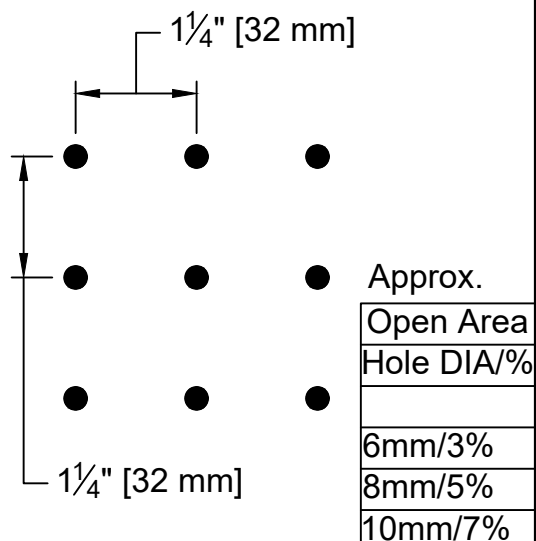
### 16mm Staggered



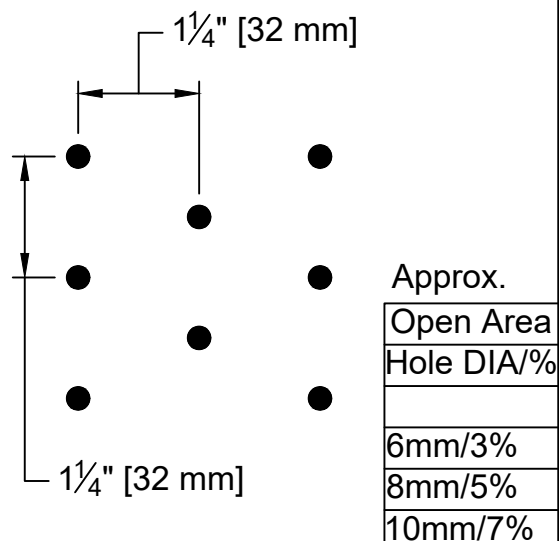
### 16mm Diagonal Centers



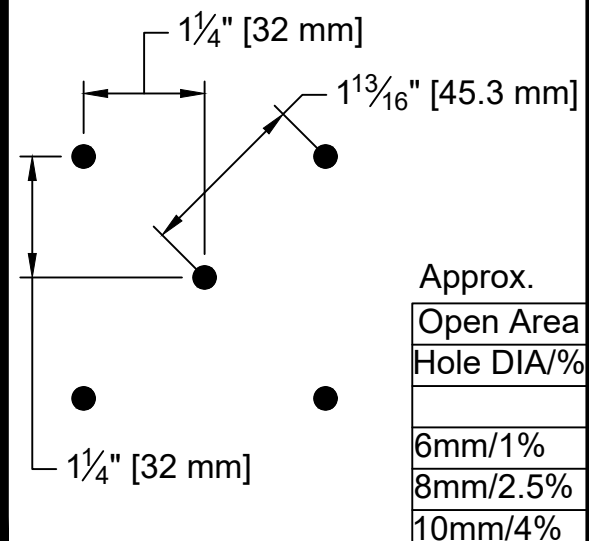
### 32mm Straight Centers



### 32mm Staggered Centers



### 32mm Diagonal



RULON INTERNATIONAL  
2000 Ring Way  
St. Augustine, FL 32092

(904) 584-1400  
info @ rulonco.com

www.rulonco.com

PROJECT:

TITLE: Aluratone 700 Typical  
Perforations Detail

SCALE:

1/2 SCALE

REVISION DATE:

MAR/14/2019

DRAWN BY:

CAP

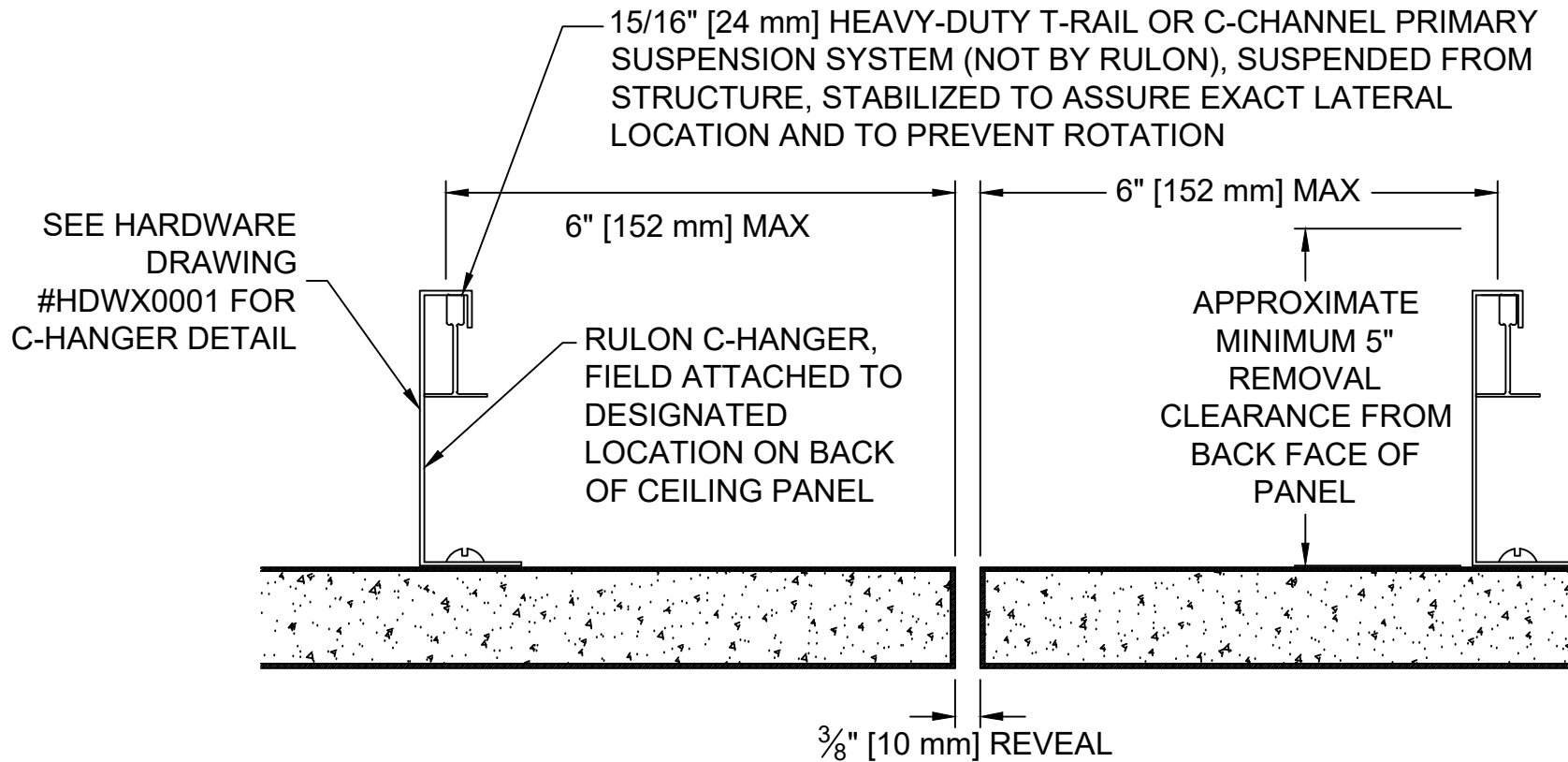
CHECKED BY:

TDA

PROJECT NUMBER:

DRAWING NUMBER:

A7AS0008



RULON INTERNATIONAL  
2000 Ring Way  
St. Augustine, FL 32092

(904) 584-1400  
info @ rulonco.com

www.rulonco.com

PROJECT:

TITLE: C-Hanger Mounting Detail

ISSUE DATE:

REVISION DATE:  
MAY/11/2022

DRAWN BY:

CAP

CHECKED BY:

TA

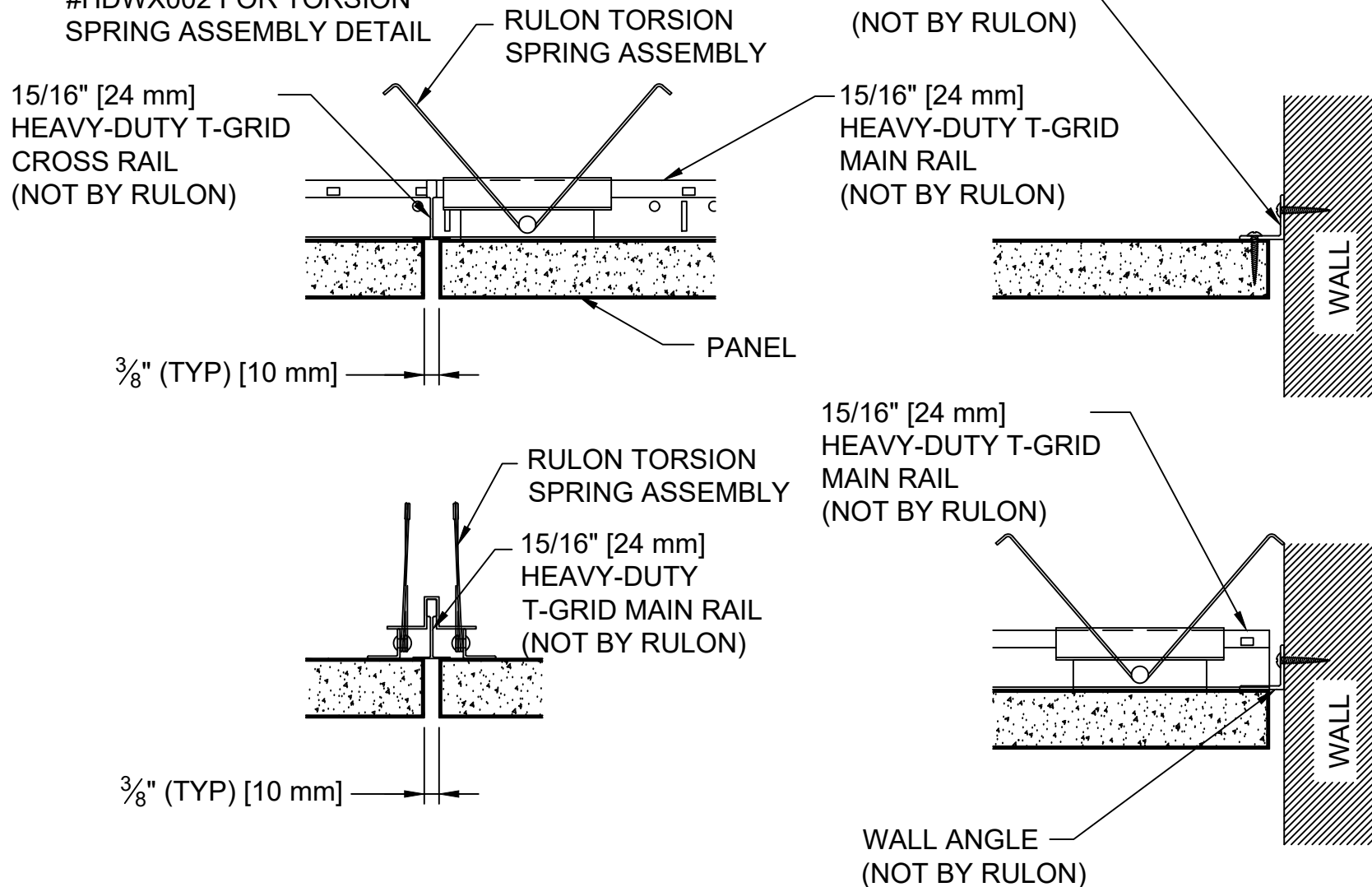
PROJECT NUMBER:

DRAWING NUMBER:

AXXX0011

NOTE:

SEE HARDWARE DRAWING  
#HDWX002 FOR TORSION  
SPRING ASSEMBLY DETAIL



RULON INTERNATIONAL  
2000 Ring Way  
St. Augustine, FL 32092

(904) 584-1400  
info @ rulonco.com

www.rulonco.com

PROJECT:

TITLE: Torsion Spring Mounting Detail -  
Flush

ISSUE DATE:

REVISION DATE:  
MAR/14/2019

DRAWN BY:

CAP

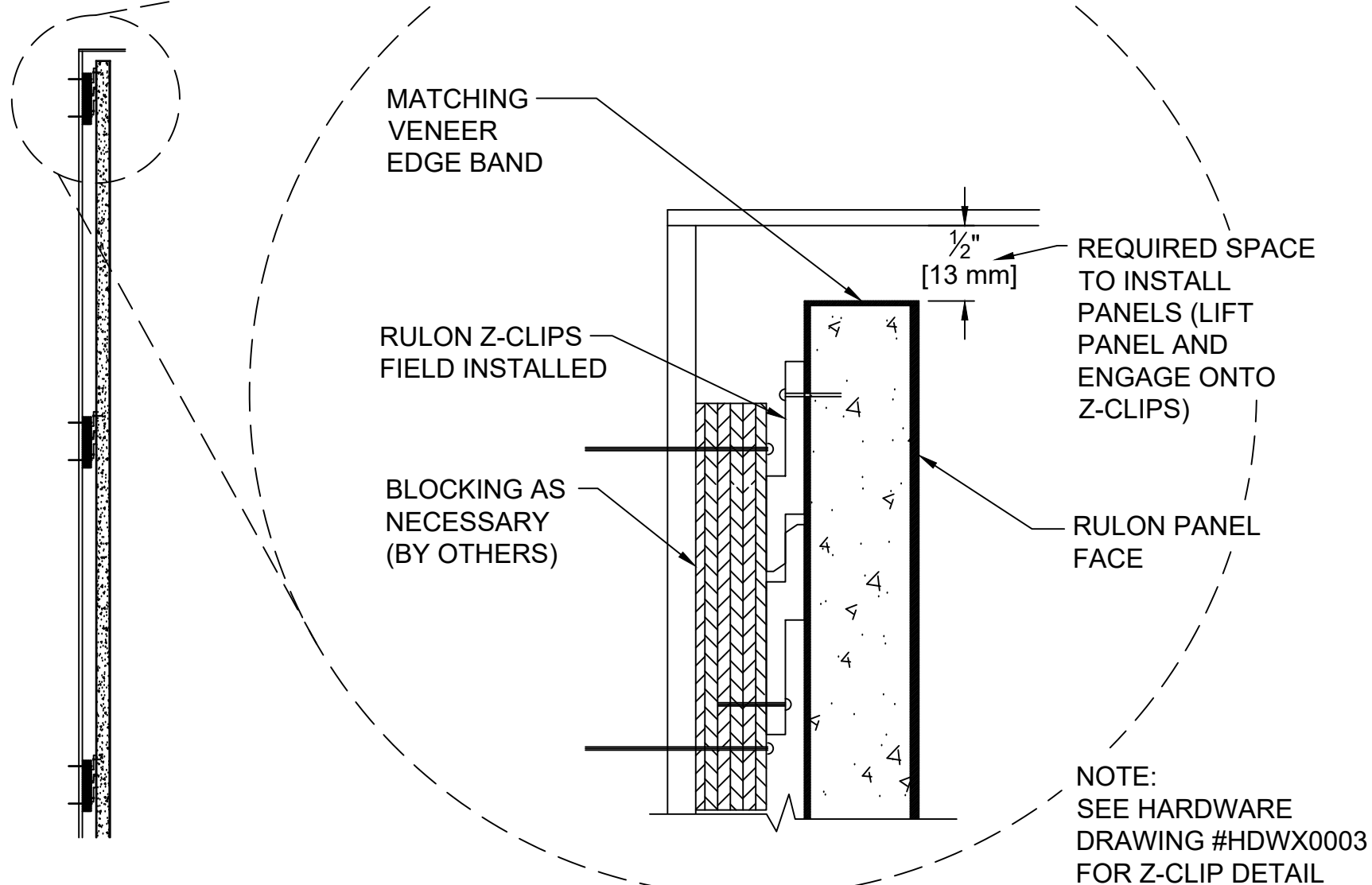
CHECKED BY:

TA

PROJECT NUMBER:

DRAWING NUMBER:

AXXX0012



RULON INTERNATIONAL  
2000 Ring Way  
St. Augustine, FL 32092

(904) 584-1400  
info @ rulonco.com

www.rulonco.com

PROJECT:

TITLE: Z-Clip Mounting Detail

ISSUE DATE:

REVISION DATE:

MAR/14/2019

DRAWN BY:

CAP

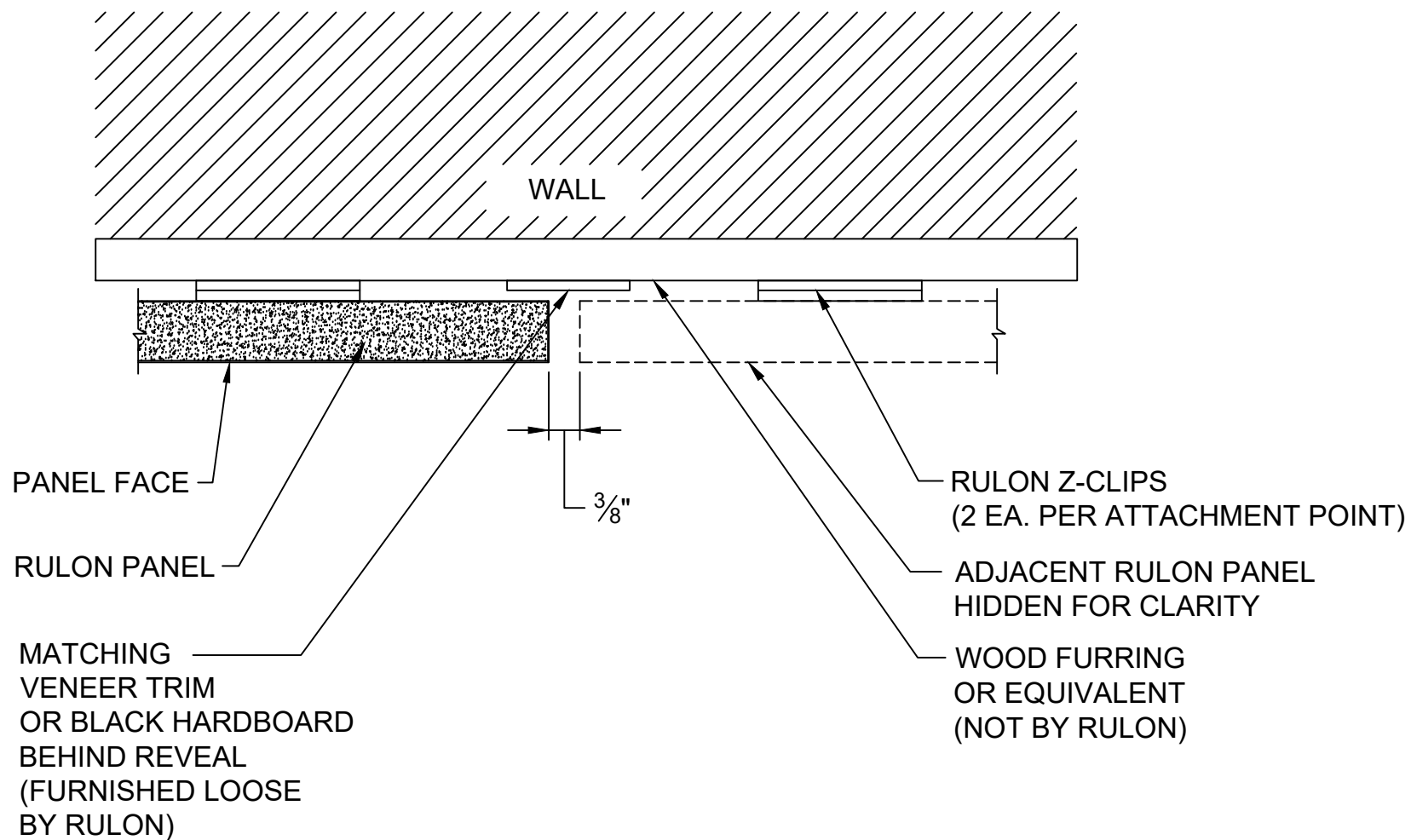
CHECKED BY:

TA

PROJECT NUMBER:

DRAWING NUMBER:

AXXX0013



RULON INTERNATIONAL  
2000 Ring Way  
St. Augustine, FL 32092

(904) 584-1400  
info @ rulonco.com

www.rulonco.com

PROJECT:

TITLE: Veneer Panel Wall with  
Reveal Trim

ISSUE DATE:

REVISION DATE:  
MAY/16/2022

DRAWN BY:

CAP

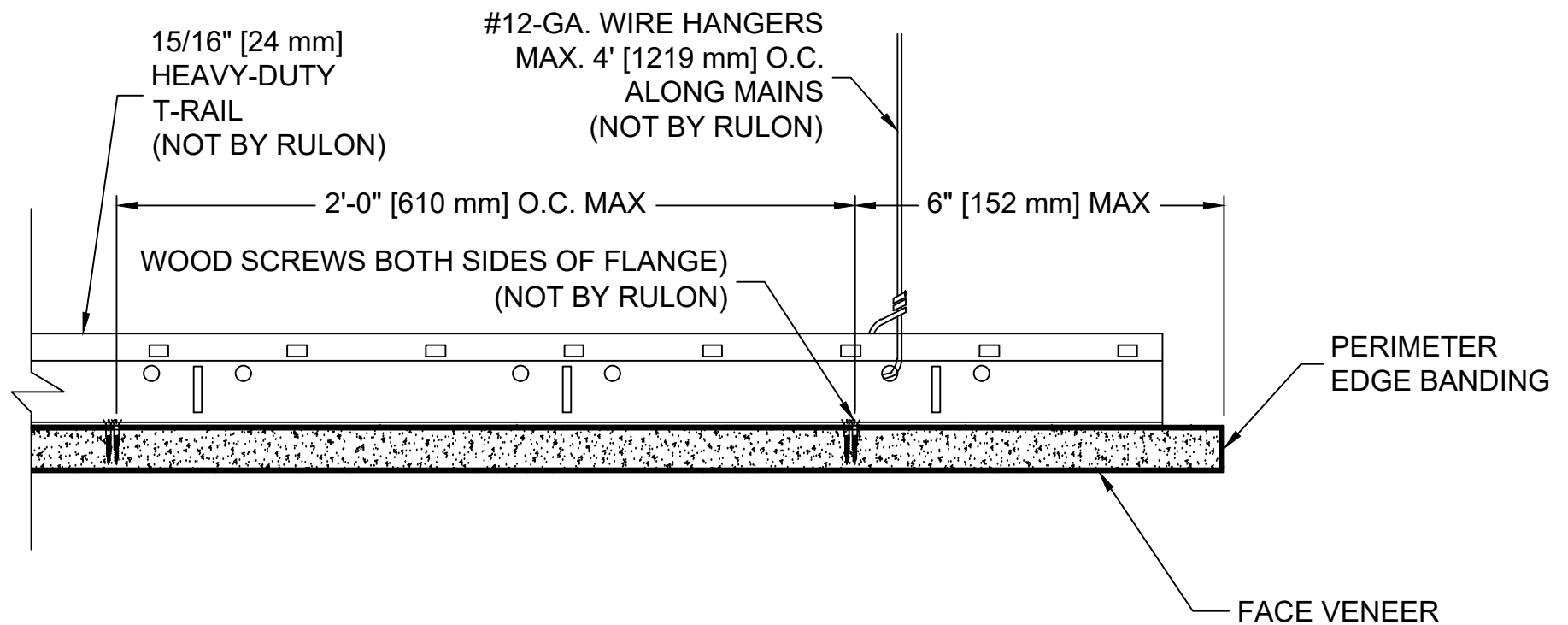
CHECKED BY:

TDA

PROJECT NUMBER:

DRAWING NUMBER:

REVEAL  
SPLINE



RULON INTERNATIONAL  
2000 Ring Way  
St. Augustine, FL 32092

(904) 584-1400  
info @ rulonco.com

www.rulonco.com

PROJECT:

TITLE:

Direct Screw Ceiling Attachment  
Detail

ISSUE DATE:

REVISION DATE:

MAY/11/2022

DRAWN BY:

CAP

CHECKED BY:

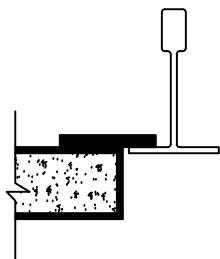
TA

PROJECT NUMBER:

DRAWING NUMBER:

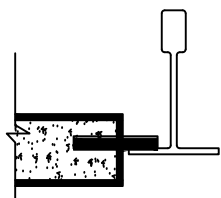
AXXX0015

Edge-banded Full  
Depth Tegular



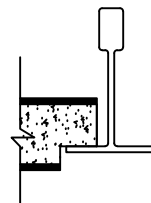
15/16" [24 mm] T-Grid  
AND  
9/16" [14 mm] T-Grid

Edge-banded Partial  
Depth Tegular



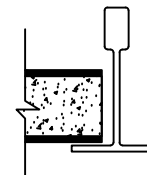
15/16" [24 mm] T-Grid  
AND  
9/16" [14 mm] T-Grid

Standard Tegular



15/16" [24 mm] T-Grid  
AND  
9/16" [14 mm] T-Grid

Lay-in



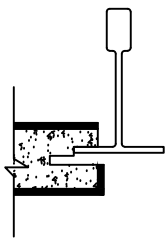
15/16" [24 mm] T-Grid  
AND  
9/16" [14 mm] T-Grid

Edge-banded



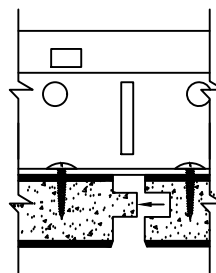
Direct attach,  
C-Hangers, Torsion  
Springs  
15/16" [24 mm] T-Grid

Edge-banded Side Slot



15/16" [24 mm] T-Grid

Tongue and Groove  
Sides (Not End-banded)



Direct Screw from Above  
Ceiling Grid  
15/16" [24 mm] T-Grid

**NOTES:**

- 1) Heavy Duty  
T-Grid  
(Not by Rulon)  
Mains to be on  
2' MAX. Centers
- 2) These edge  
conditions apply  
to 3/4" [19 mm]  
Thick Panels  
only



RULON INTERNATIONAL  
2000 Ring Way  
St. Augustine, FL 32092

(904) 584-1400  
info @ rulonco.com

www.rulonco.com

PROJECT:

TITLE:

Veneer Edge Conditions Ceilings

ISSUE DATE:

MAR/14/2019

REVISION DATE:

OCT/01/2024

DRAWN BY:

CAP

CHECKED BY:

TDA

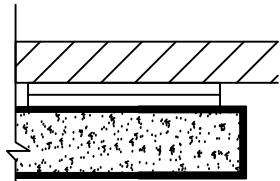
PROJECT NUMBER:

DRAWING NUMBER:

AXX0016C

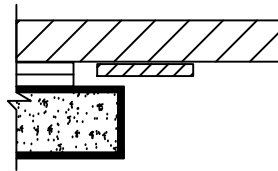


### Edge-banded



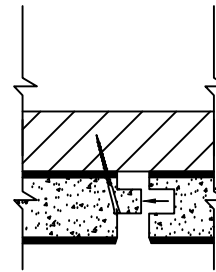
For use with Z-clips

### Edge-banded with Reveal Spacer



Black or Matching Wood  
Veneer Reveal Spacer  
Furnished Loose  
(Furring Not by Rulon)  
[Z-clips]

### Tongue and Groove Sides (Not End-banded)



Direct Attach  
Through Tongue into  
Furring (Not by Rulon)  
16" MAX. On Center

### **NOTES:**

- 1) Furring (Not by Rulon)  
2' MAX  
On Center  
(Unless Noted Otherwise)
- 2) These edge conditions apply to 3/4" [19 mm] Thick Panels only



RULON INTERNATIONAL  
2000 Ring Way  
St. Augustine, FL 32092

(904) 584-1400  
info @ rulonco.com

www.rulonco.com

PROJECT:

TITLE:

Veneer Edge Conditions Walls

ISSUE DATE:

MAR/14/2019

REVISION DATE:

OCT/01/2024

DRAWN BY:

CAP

CHECKED BY:

TDA

PROJECT NUMBER:

DRAWING NUMBER:

AXX0016W