



Rulon Beams Installation Guide

2000 Ring Way Rd, St. Augustine, FL 32092 | (904) 584-1400 | rulonco.com

Rulon Beams Installation Guide

Receipt and Storage:

- a. All material shall be delivered to the project site in the original, labeled, unopened packages. Keep packages of components unopened until it is time to acclimate to the building conditions
- b. Material shall be stored flat and level in a fully enclosed space. **DO NOT Store Rulon products in direct sunlight.** Seventy-two hours before beginning ceiling installation, beams must be moved into the room where the HVAC system is operating and the packaging shall be opened. This is to allow the beams to adjust to the room environment. Wood beams are to be stored off the floor.
- c. Care in handling must be exercised to avoid damage.

Before You Begin Installation:

- a. Ensure that all necessary tools are available (see next page)
- b. Check components to ensure all items required are at hand (see Page 2)
- c. Review this guide in its entirety. If you have any questions, call Rulon before you start the installation
- d. Installation shall be done only when the temperature and humidity closely approximate the interior conditions that will exist when the building is occupied. The heating and cooling systems shall be operating before, during, and after installation, with the humidity of the interior spaces maintained between 25% and 55%, temperature between 60 to 90 degrees F.
- e. It is important that area have proper ventilation, especially in high moisture areas. There shall be no excessive buildup of heat in the space.
- f. Prior to the start of installation, all exterior windows and doors are to be in place, glazed, and weather-stripped. The roof is to be watertight, and all wet trades' work is to be completed, and thoroughly dry.
- g. Mechanical, electrical, and other utility service installations above the ceiling plane shall have been completed. No materials should rest or wrap around, the ceiling suspension components or connecting hangers.

If You Need Further Assistance:

- If you have any questions, or if you encounter a situation not covered by this installation guide, contact the Rulon Technical Department.

Phone: 1-800-22RULON (1-800-227-8566), 904-584-1400

Rulon Beams Installation Guide

Tools and Equipment:

- Standard leveling devices
- Circular saw / Miter Saw
- Nail gun/Staple Gun
- Painters tape
- Colored putty/ fill crayons
- Screw Guns/Drills

Ceiling and Wall Components:

Supplied by Rulon:

- Accent Beams in 8' or 10' lengths with internal ribs
- End Caps (when applicable)
- Touch-up finish

Supplied by Others:

- Ceilings – Heavy Duty Grid (when applicable), #12 Gauge Hanger Wire or threaded rod and hardware
- Blocking
- Plywood Splice Plates and hardware (when applicable)
- Suspension hardware and components

References:

- Optional: Seismic Considerations – Refer to Local Code

Rulon Beams Installation Guide

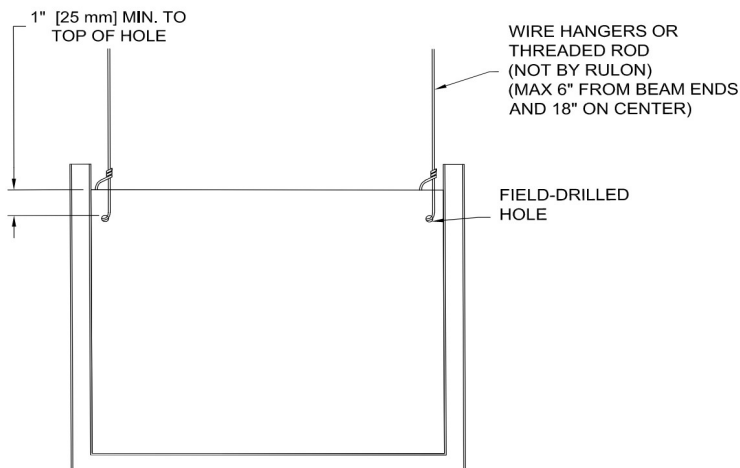
Step 1: Ceiling Preparation

Lay-out and install hanger wire plumb and true. Wires need to be hung directly from building structure, unless otherwise covered in the Rulon shop drawings, or reviewed and approved by the Rulon Engineering Department.

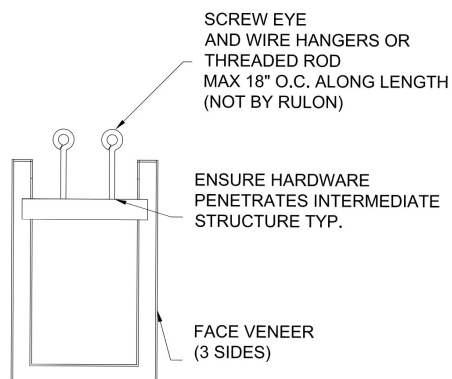
Step 2: Installing Beams

Direct Suspension (Typical)

Install Vertical Rib beam ribs per the guidelines in the detail below. Hang beams to correct elevations. This construction is typically for beams greater than 6" wide or curved. Beams will be nominal $\frac{3}{4}$ " walled.

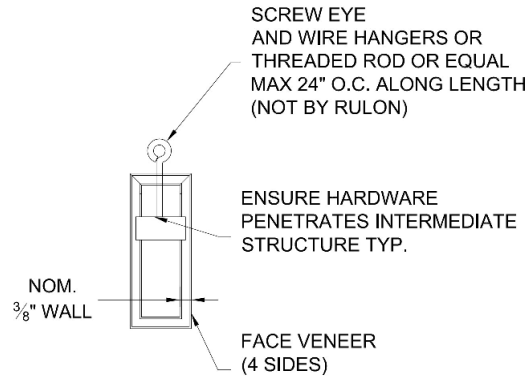
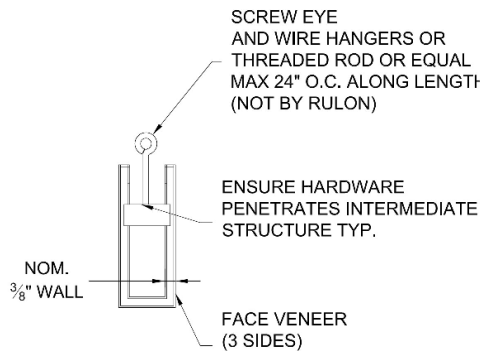


Beams more than 2 $\frac{1}{2}$ " wide less than 6" wide are installed with screw eyes/eye lags as shown below. Beams will be nominal $\frac{3}{4}$ " walled.



Rulon Beams Installation Guide

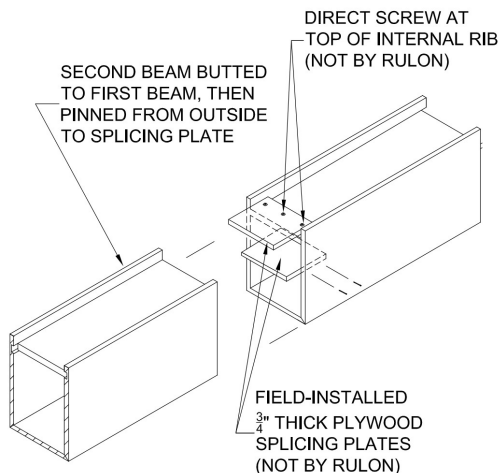
Small Beams up to 2½" wide should be installed as shown below. Beams will be nominal 3/8" walled.



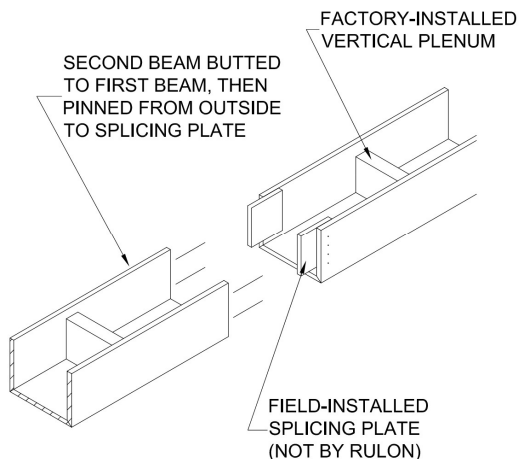
If penetrations are required, field-cuts shall not penetrate the internal vertical ribs (if applicable). For the field-cut beams, Rulon will supply an adequate amount of touch up that should be field applied with a foam brush (or end caps if specified – see page 6).

Step 3: Splice Joints

Use plywood as shown below to splice beams together for runs greater than 8 feet or 10 feet (maximum beam length).

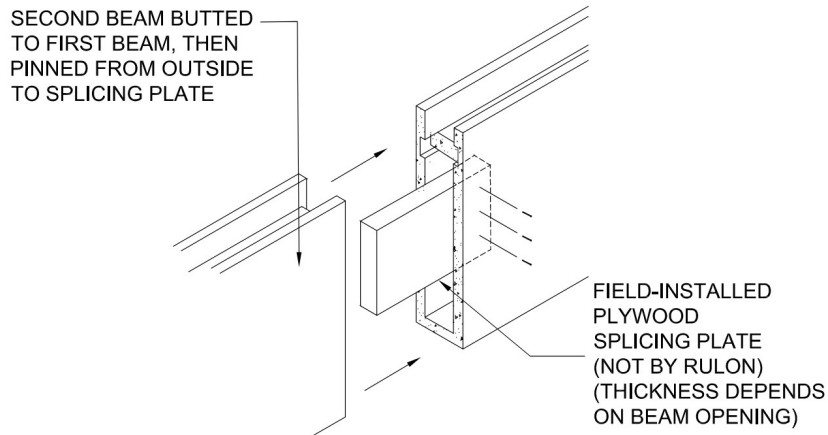


Horizontal Ribs



Vertical Ribs

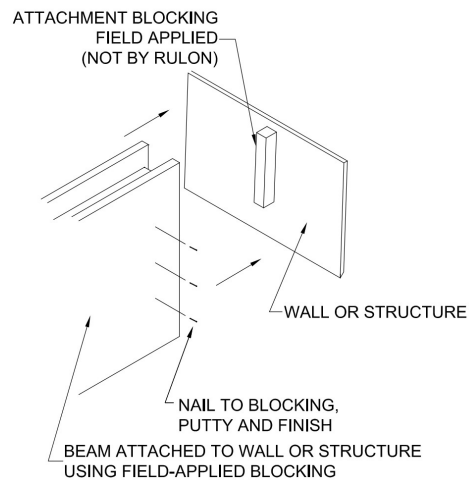
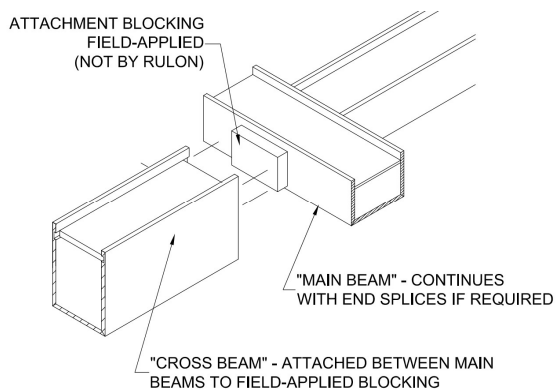
Rulon Beams Installation Guide



Narrow Beams (up to 2 1/2" wide)

Step 4: Borders

Use contactor-supplied blocking to attach beams to walls/other beams

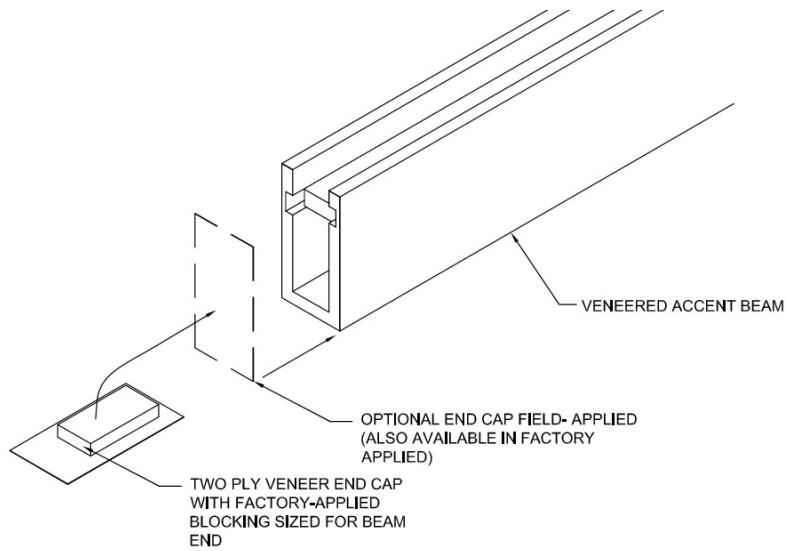


Detail Applies to Horizontal Or Vertical Ribs

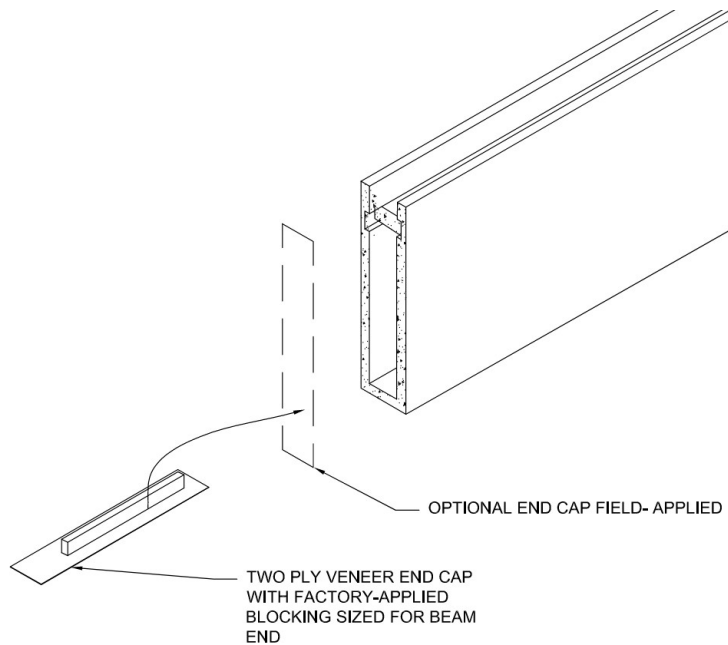
Detail Applies to Narrow Beams

Rulon Beams Installation Guide

Refer to details below for optional field-applied end caps.



If ends are coordinated, optional end caps may also be factory-applied for large $\frac{3}{4}$ " nominal walled beams.



Rulon Beams Installation Guide

Step 5: Cleanup

1. Clean all wood beams and borders free of dirt, dust, grease, oils, and fingerprints. Routine cleaning is best accomplished with a soft, lint-free cloth lightly dampened with water or an inert household dust attractant. Allowing airborne dust, which is somewhat abrasive, to build up will tend to dull a finish over time. Refer to the Rulon Care and Maintenance document for further instructions.
2. Remove and replace all work that cannot be successfully cleaned or repaired.