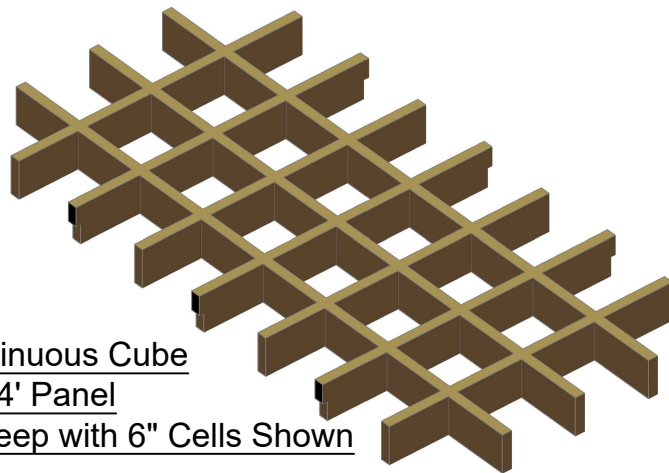


<u>DRAWING #</u>	<u>TITLE</u>	<u>DRAWING #</u>	<u>TITLE</u>
CCX00001	Continuous Wood Cube Ceiling Profile	CML00001	Lay-In Modular Style Wood Cube Ceiling Profile - 2' [610 mm] x 2' [610 mm] Panel
CCX00004	Continuous Cube Ceiling - 2' [610 mm] x 4' [1219 mm] Opening	CML00002	Lay-In Modular Style Wood Cube Ceiling Profile - 2' [610 mm] X 4' [1219 mm] Panel
CCX00005	Continuous Cube Ceiling Suspension Detail		
CCX00006	Continuous Cube Perimeter Condition	CML00004	Lay-In Modular Cube Ceiling Instalation Detail
CCX00008	Continuous Cube Ceiling - 2' [610 mm] X 4' [1219 mm] Opening - Perimeter Installation Detail	CML00005	Lay-In Modular Cube Ceiling Suspension Detail
		CML00006	Lay-In Modular Cube Ceiling Perimeter Condition
CXX00009	Wood Cube Ceiling - Can Light Fixture w/Insert, Typical	CMT00001	Tegular Recessed Modular Style Wood Cube Ceiling Profile - 2' [610 mm] X 2' [610 mm] Panel
		CMT00002	Tegular Recessed Ceiling Profile - 2' [610 mm] X 4' [1219 mm] Panel
		CMT00004	Tegular Recessed Modular Cube Ceiling Instalation Detail
		CMT00005	Tegular Recessed Modular Cube Ceiling Suspension Detail
		CMT00006	Tegular Recessed Modular Cube Ceiling Perimeter Condition



Continuous Cube
2' X 4' Panel
3" Deep with 6" Cells Shown



RULON INTERNATIONAL
2000 Ring Way
St. Augustine, FL 32092

(904) 584-1400
info @ rulonco.com

www.rulonco.com

PROJECT:

TITLE: Wood Cube Ceiling Index

ISSUE DATE:

REVISION DATE:
FEB/02/2024

DRAWN BY:

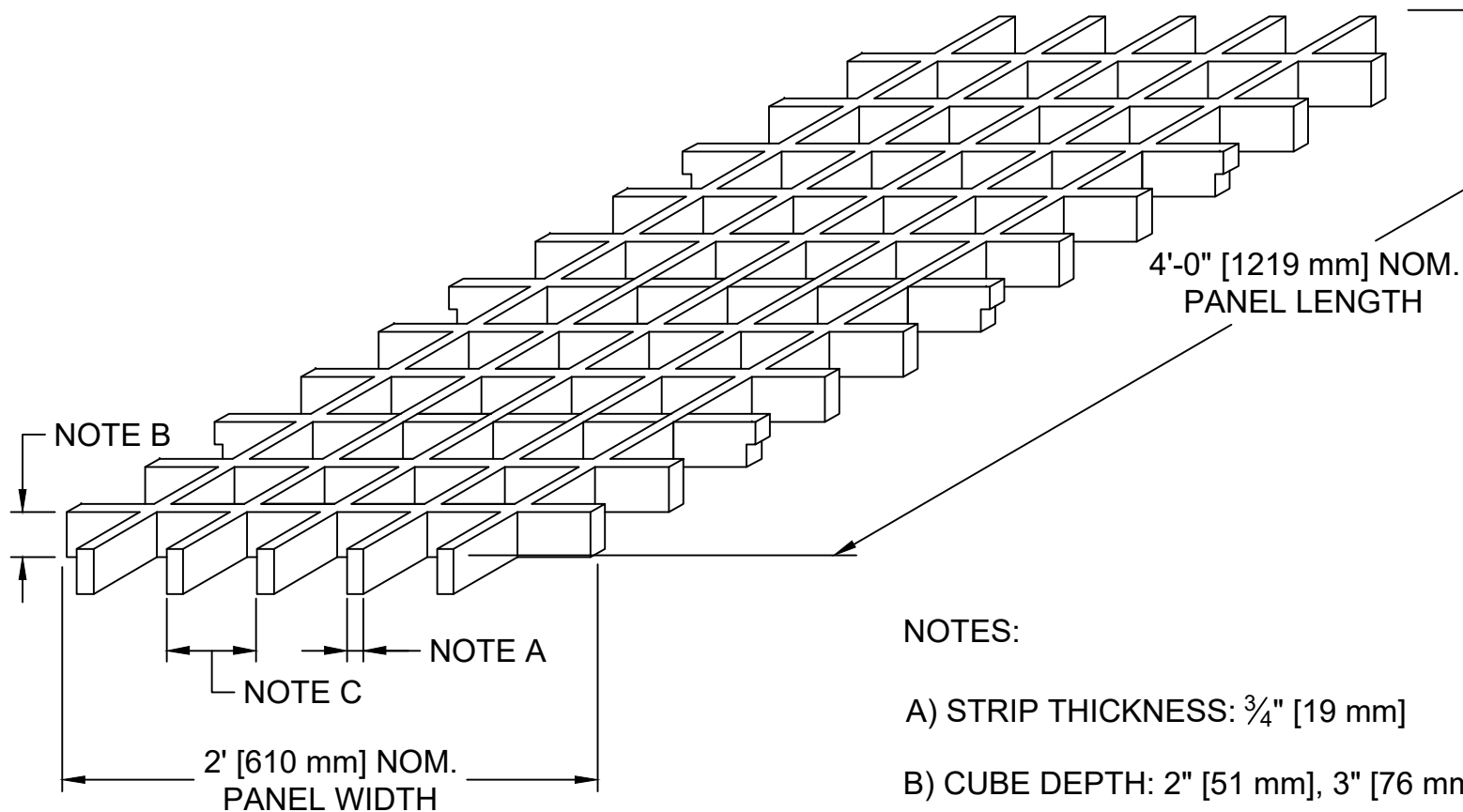
CAP

CHECKED BY:

PROJECT NUMBER:

DRAWING NUMBER:

CXXINDEX



NOTES:

A) STRIP THICKNESS: $\frac{3}{4}$ " [19 mm]

B) CUBE DEPTH: 2" [51 mm], 3" [76 mm], 4" [102 mm]

C) CELL SIZE: 3" X 3" ($2\frac{1}{4}$ " CLEAR), 4" X 4" ($3\frac{1}{4}$ " CLEAR)
6" X 6" ($5\frac{1}{4}$ " CLEAR) 8" X 8" ($7\frac{1}{4}$ " CLEAR)



RULON INTERNATIONAL
2000 Ring Way
St. Augustine, FL 32092

(904) 584-1400
info@rulonco.com
www.rulonco.com

PROJECT:

TITLE: Continuous Wood Cube Ceiling
Profile

ISSUE DATE:

REVISION DATE:
JUL/18/2022

DRAWN BY:

CAP

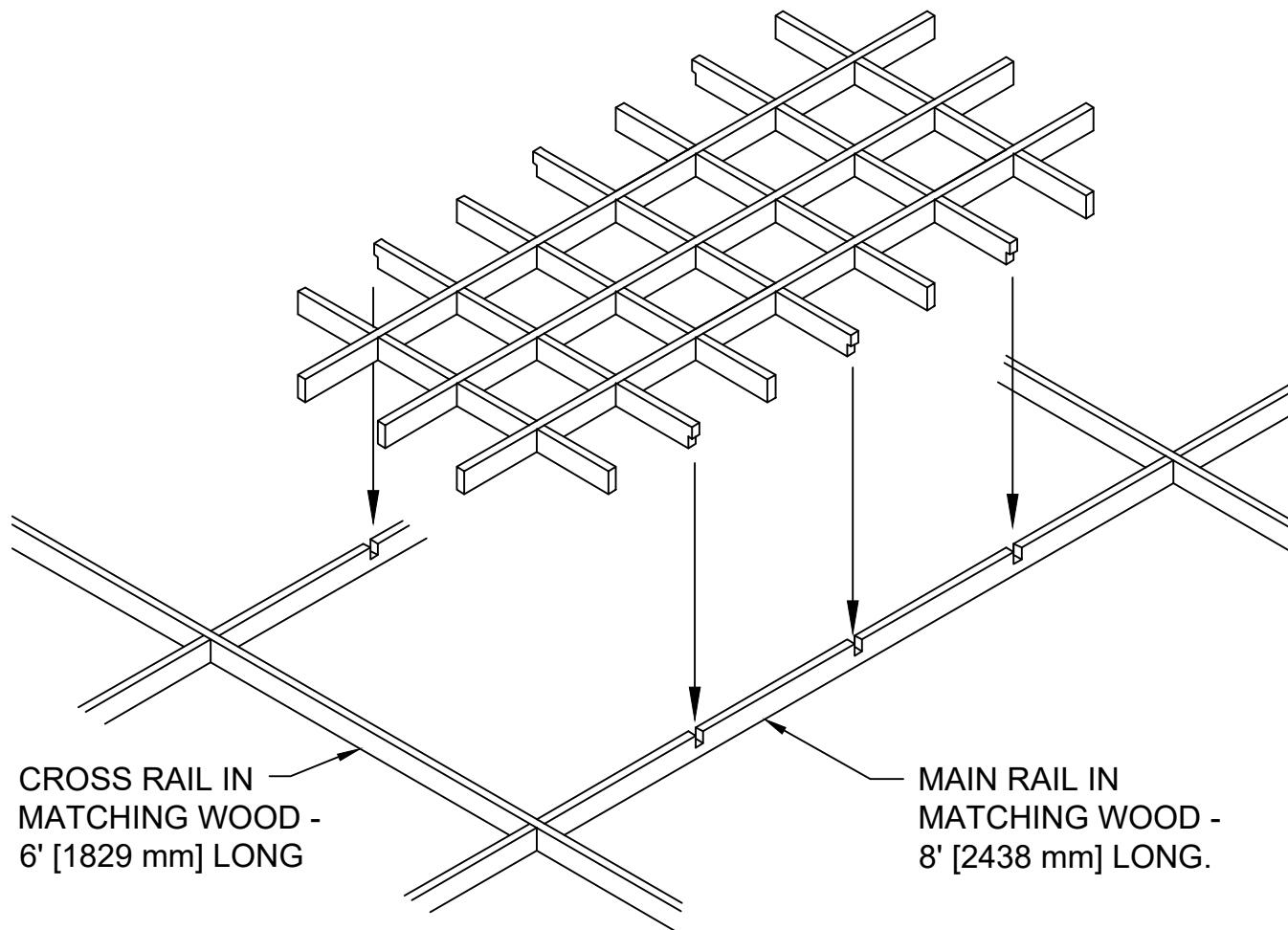
CHECKED BY:

TDA

PROJECT NUMBER:

DRAWING NUMBER:

CCX00001



RULON INTERNATIONAL
2000 Ring Way
St. Augustine, FL 32092

(904) 584-1400
info@rulonco.com
www.rulonco.com

PROJECT:

TITLE: Continuous Cube Ceiling - 2'
[610mm] x 4' [1219 mm] Opening

ISSUE DATE:

REVISION DATE:
MAR/14/2019

DRAWN BY:

CAP

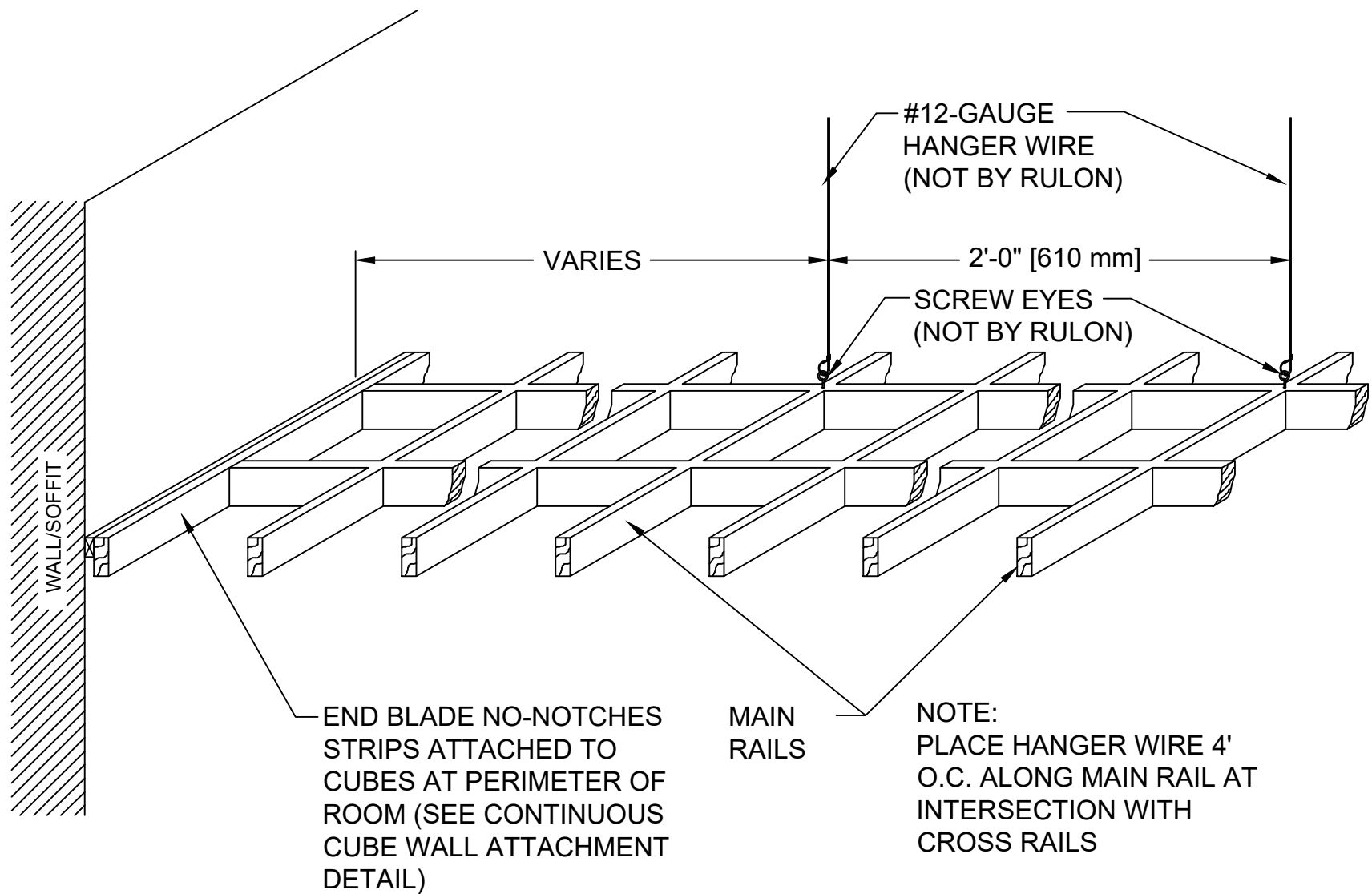
CHECKED BY:

JD

PROJECT NUMBER:

DRAWING NUMBER:

CCX00004



RULON INTERNATIONAL
2000 Ring Way
St. Augustine, FL 32092

(904) 584-1400
info@rulonco.com
www.rulonco.com

PROJECT:

TITLE: Continuous Cube Ceiling
Suspension Detail

ISSUE DATE:

REVISION DATE:
JUL/29/2022

DRAWN BY:

CAP

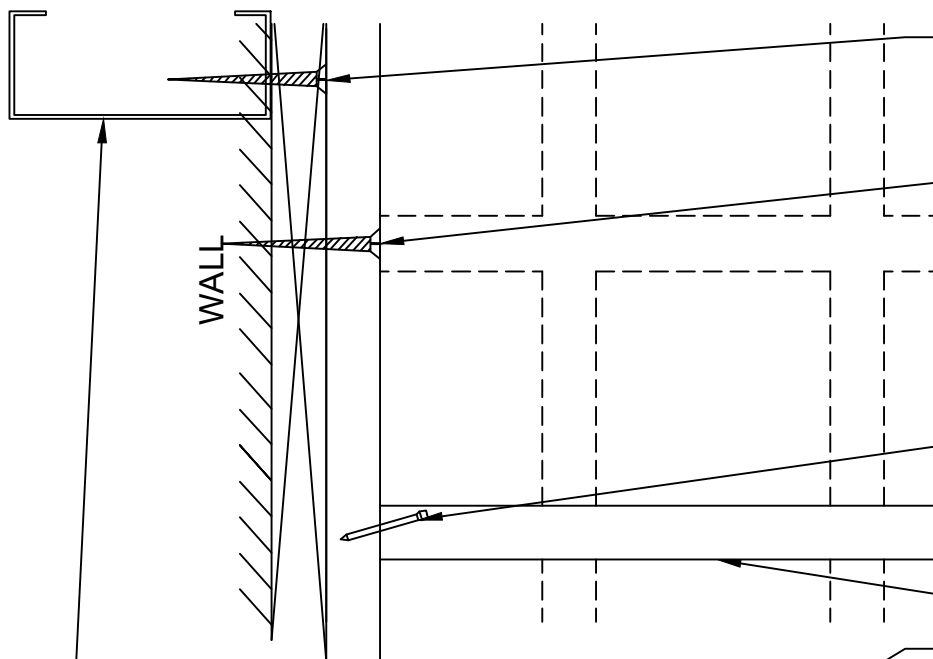
CHECKED BY:

TDA

PROJECT NUMBER:

DRAWING NUMBER:

CCX00005



PLAN VIEW

STEP 1: CONTINUOUS BLOCKING
(NOT BY RULON)
ATTACHED TO WALL AT STUDS

STEP 2: ATTACH END BLADE NO-NOTCHES
TO BLOCKING. COORDINATE WITH
CUBE PANEL LOCATION TO
HIDE SCREW.
(CUBE PANEL SHOWN HIDDEN
FOR CLARITY)

STEP 3: END BLADE TOE-NAILED
TO MAIN OR CROSS
PRIOR TO INSTALLING PANEL

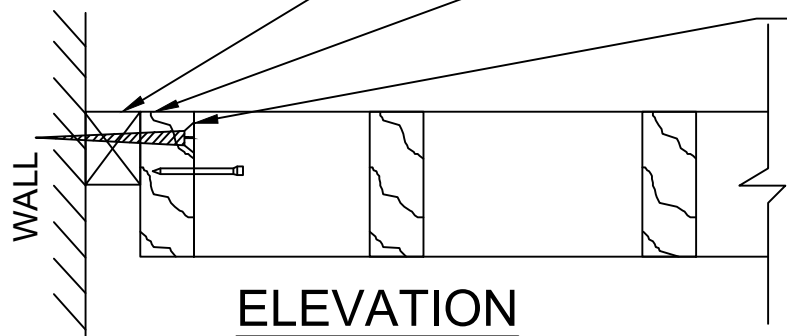
MAIN OR CROSS

CONTINUOUS BLOCKING
PAINTED BLACK
(NOT BY RULON)

WOOD CUBE FIELD-TRIMMED
TO SIZE. PIN NAILED TO
END BLADE NO-NOTCHES

END BLADE NO-NOTCHES
TRIM ATTACHED TO BLOCKING
AND WALL

STUD OR EQUIVALENT
(NOT BY RULON)



ELEVATION



RULON INTERNATIONAL
2000 Ring Way
St. Augustine, FL 32092

(904) 584-1400
info@rulonco.com
www.rulonco.com

PROJECT:

TITLE:

Continuous Cube Perimeter
Condition

ISSUE DATE:

REVISION DATE:

JUL/29/2022

DRAWN BY:

CAP

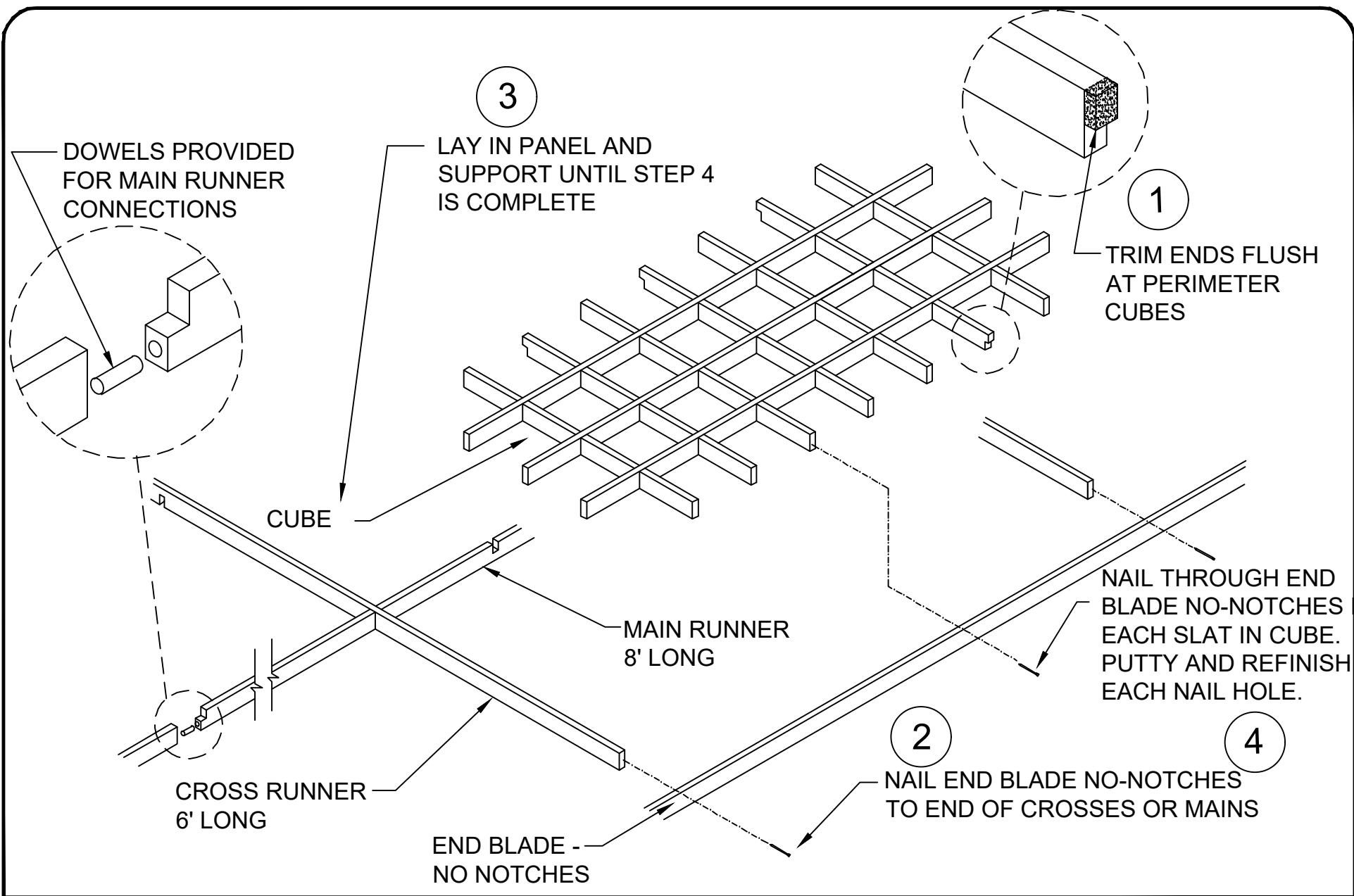
CHECKED BY:

TDA

PROJECT NUMBER:

DRAWING NUMBER:

CCX00006



RULON INTERNATIONAL
2000 Ring Way
St. Augustine, FL 32092

(904) 584-1400
info@rulonco.com
www.rulonco.com

PROJECT:

TITLE: Continuous Cube -2' [610 mm] X
4' [1219 mm] Opening Perimeter
Installation Detail

ISSUE DATE:

REVISION DATE:
JUL/29/2022

DRAWN BY:

CAP

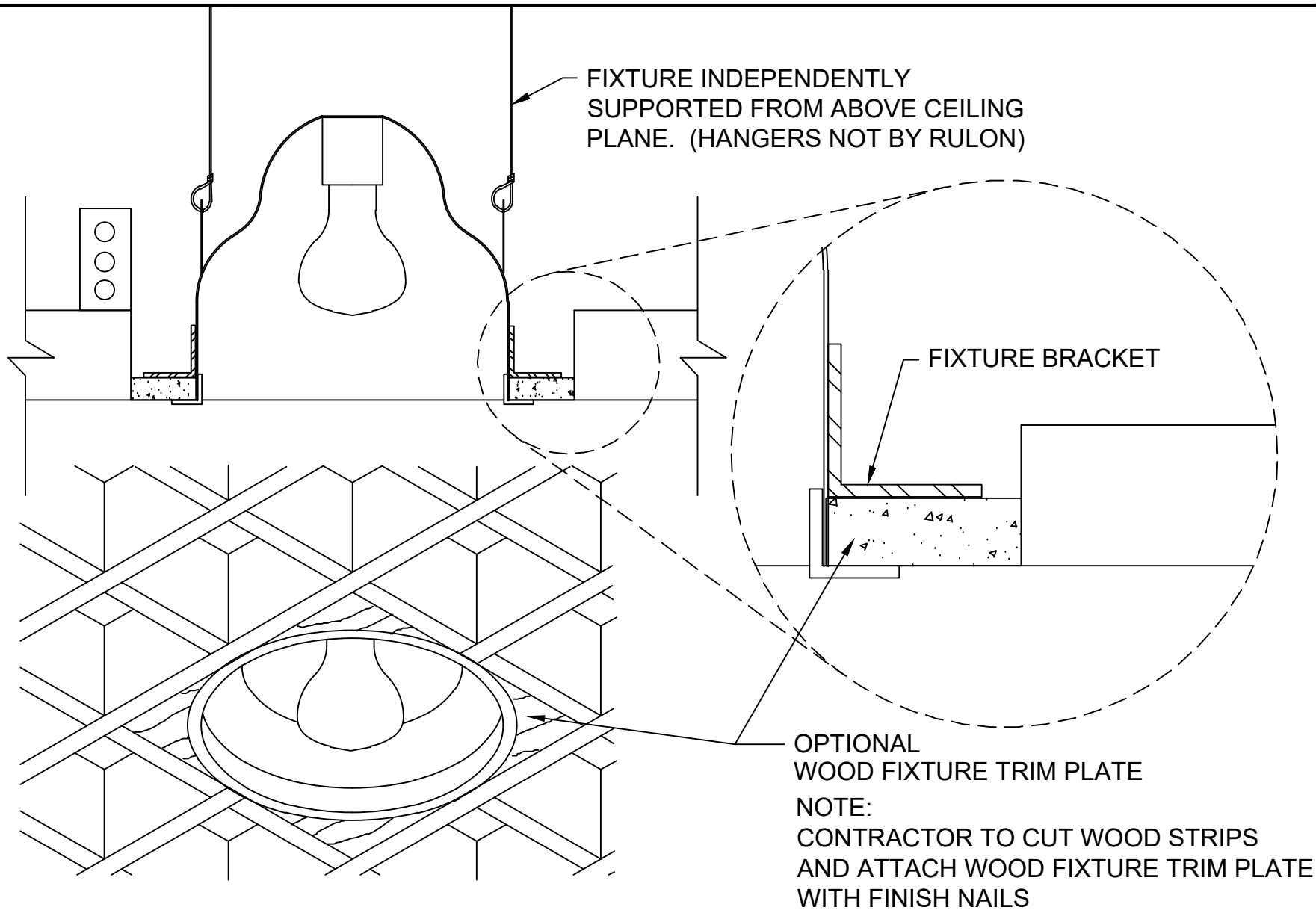
CHECKED BY:

TDA

PROJECT NUMBER:

DRAWING NUMBER:

CCX00008



RULON INTERNATIONAL
2000 Ring Way
St. Augustine, FL 32092

(904) 584-1400
info@rulonco.com
www.rulonco.com

PROJECT:

TITLE: Wood Cube Ceiling - Can Light
Fixture w/Insert, Typical

ISSUE DATE:

REVISION DATE:
MAR/14/2019

DRAWN BY:

CAP

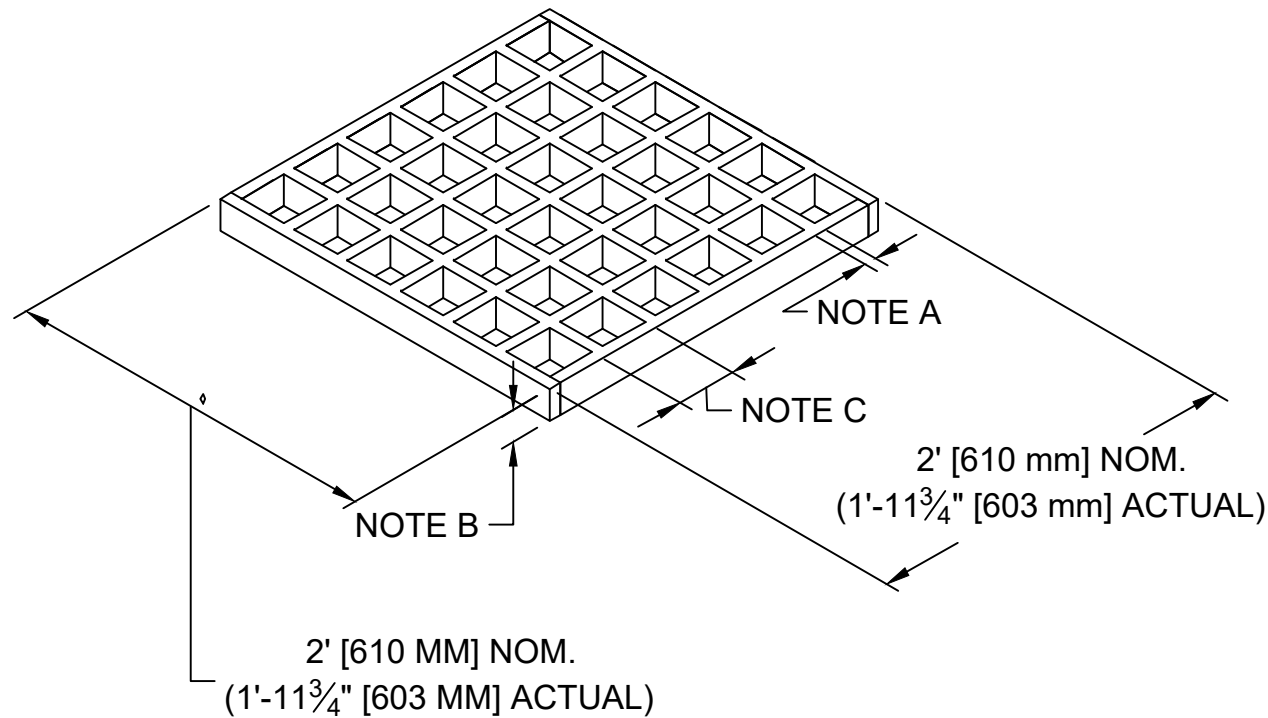
CHECKED BY:

JD

PROJECT NUMBER:

DRAWING NUMBER:

CXX00009



NOTES:

A) STRIP THICKNESS: 3/4" [19 mm]

B) CUBE DEPTH: 2" [51 mm], 3" [76 mm], 4" [102 mm]

C) CELL SIZE: 3"X 3" (±2" CLEAR); 4" X 4" (±3" CLEAR) 6"X 6" (±5" CLEAR); 8" X 8" (±7" CLEAR)



RULON INTERNATIONAL
2000 Ring Way
St. Augustine, FL 32092

(904) 584-1400
info@rulonco.com
www.rulonco.com

PROJECT:

TITLE: Lay-In Modular Style Wood Cube
Ceiling Profile - 2' [610 mm] x 2'
[610 mm] Panel

ISSUE DATE:

REVISION DATE:
JUL/18/2022

DRAWN BY:

CAP

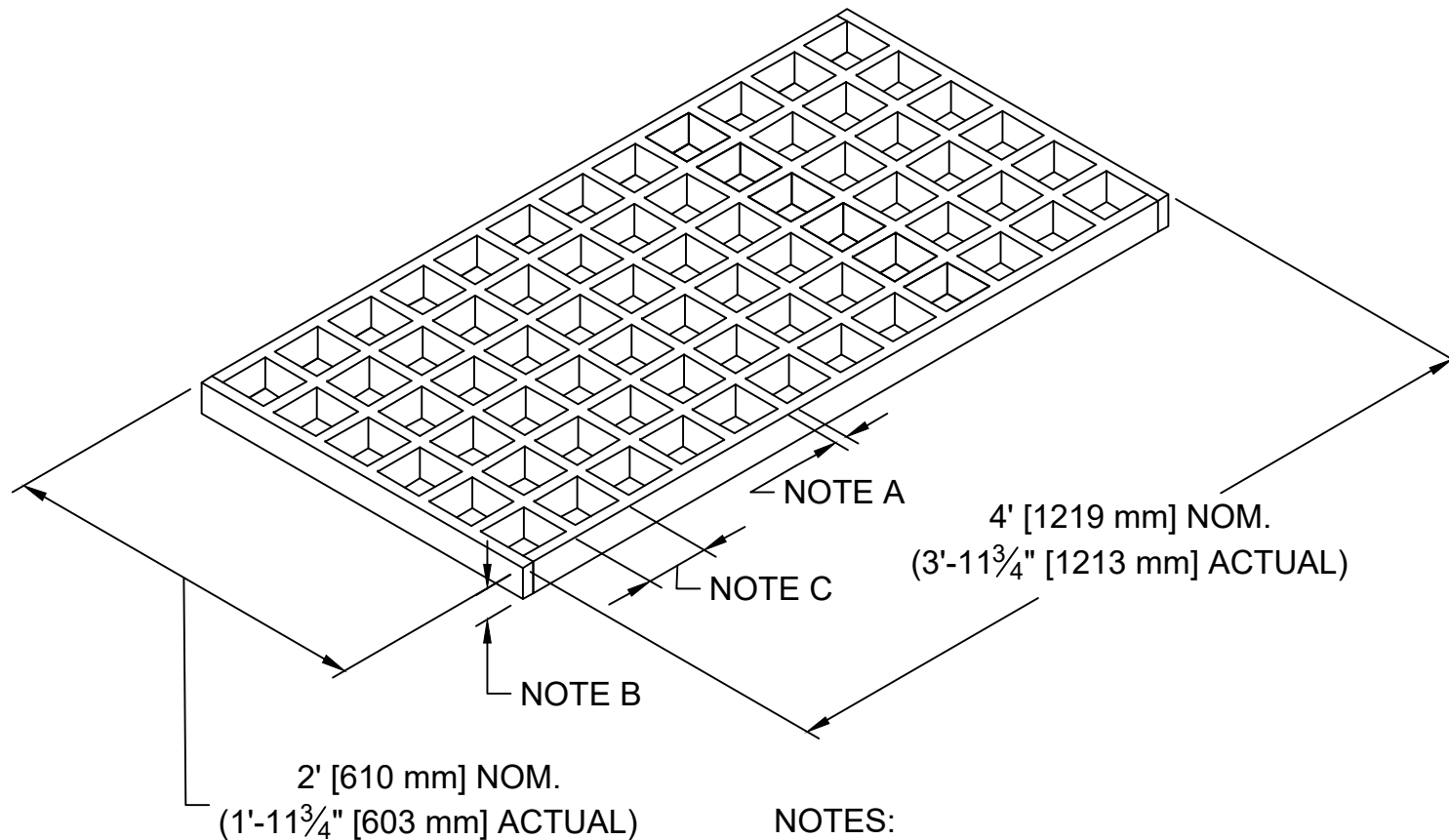
CHECKED BY:

TA

PROJECT NUMBER:

DRAWING NUMBER:

CML00001



NOTES:

A) STRIP THICKNESS: 3/4" [19 mm]

B) CUBE DEPTH: 2" [51 mm], 3" [76 mm], 4" [102 mm]

C) CELL SIZE: 3" X 3" ($\pm 2"$ CLEAR); 4" X 4" ($\pm 3"$ CLEAR) 6" X 6" ($\pm 5"$ CLEAR); 8" X 8" ($\pm 7"$ CLEAR)



RULON INTERNATIONAL
2000 Ring Way
St. Augustine, FL 32092

(904) 584-1400
info@rulonco.com
www.rulonco.com

PROJECT:

TITLE: Lay-In Modular Style Wood Cube
Ceiling Profile - 2' [610 mm] x 4'
[1219 mm] Panel

ISSUE DATE:

REVISION DATE:
JUL/18/2022

DRAWN BY:

CAP

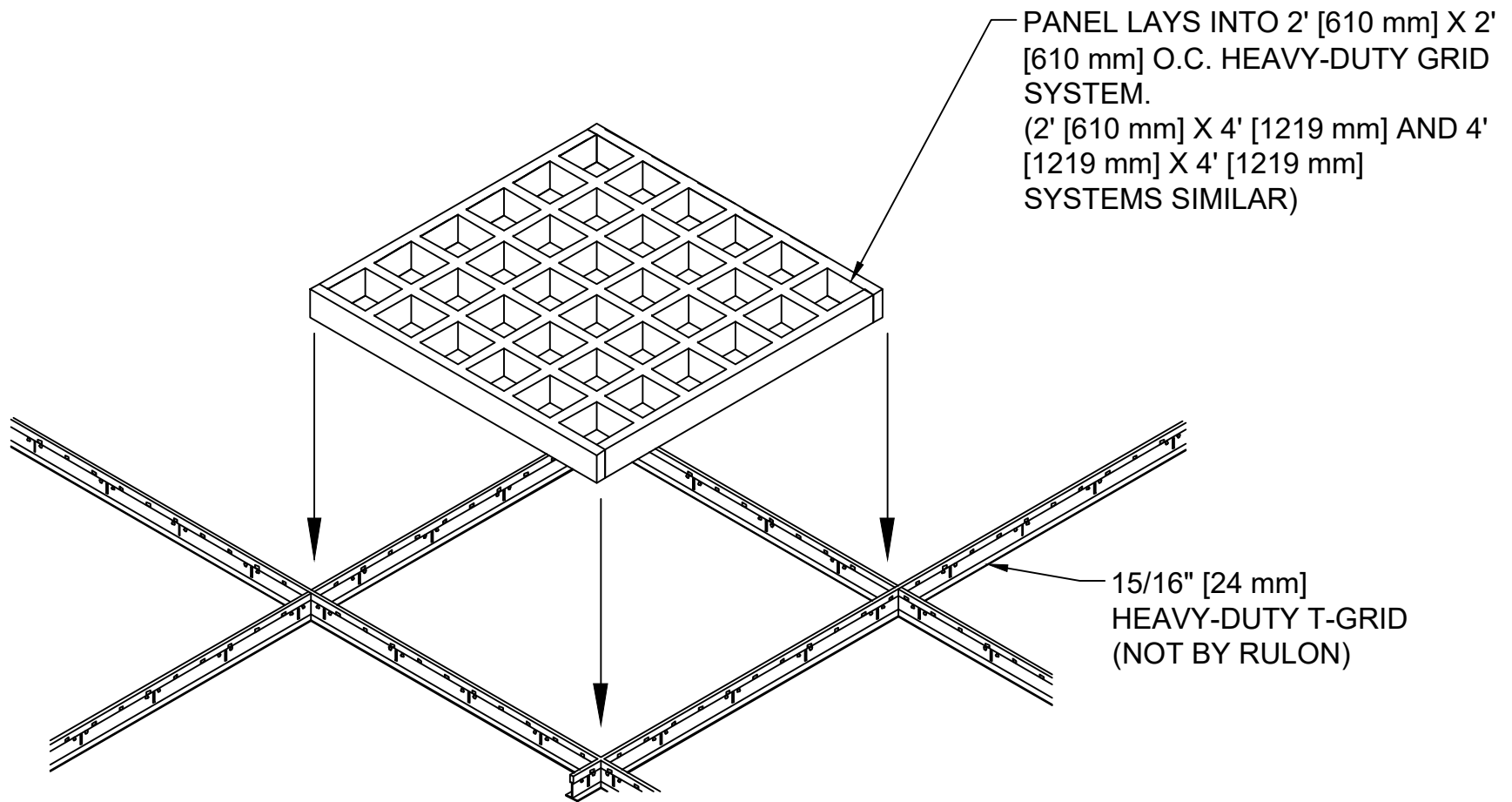
CHECKED BY:

TA

PROJECT NUMBER:

DRAWING NUMBER:

CML00002



RULON INTERNATIONAL
2000 Ring Way
St. Augustine, FL 32092

(904) 584-1400
info@rulonco.com
www.rulonco.com

PROJECT:

TITLE: Lay-in Modular Cube Ceiling
Installation Detail

ISSUE DATE:

REVISION DATE:
MAR/14/2019

DRAWN BY:

CAP

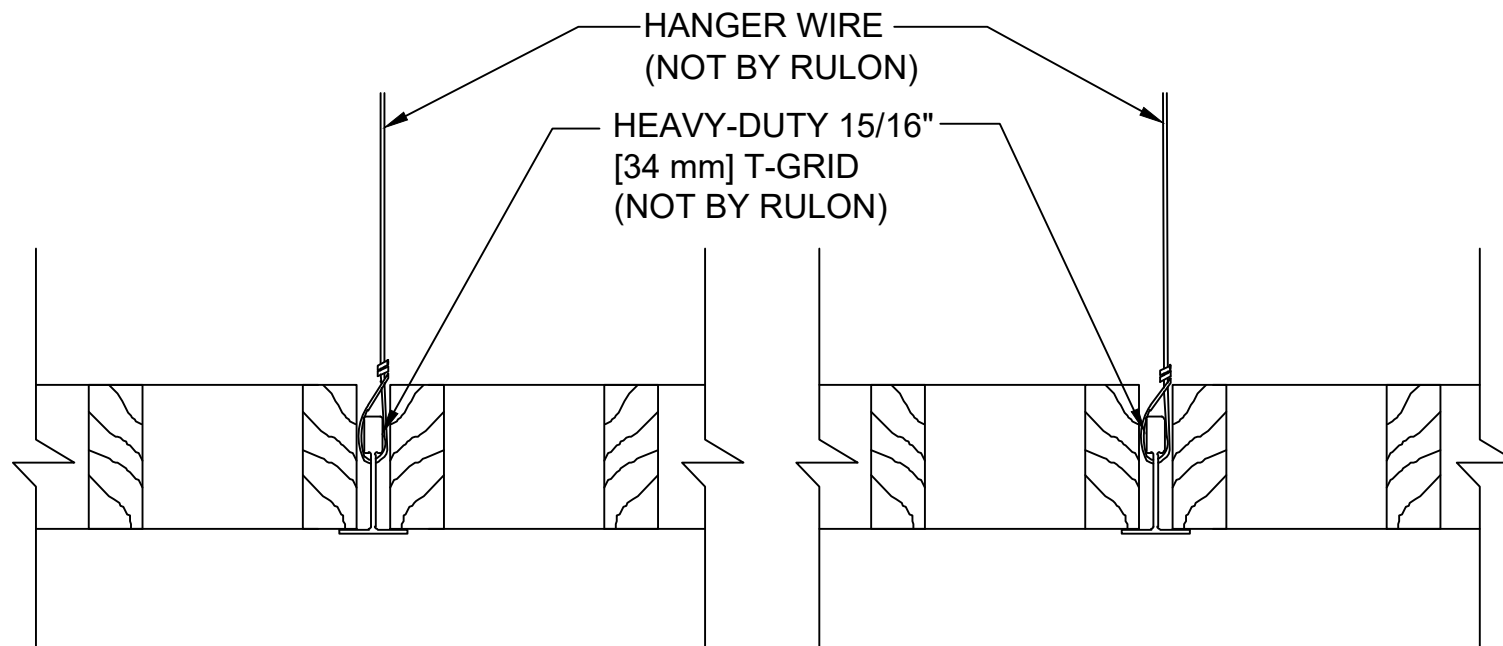
CHECKED BY:

JD

PROJECT NUMBER:

DRAWING NUMBER:

CML00004



RULON INTERNATIONAL
2000 Ring Way
St. Augustine, FL 32092

(904) 584-1400
info@rulonco.com
www.rulonco.com

PROJECT:

TITLE: Lay-In Modular Cube Ceiling
Suspension Detail

ISSUE DATE:

REVISION DATE:
MAR/14/2019

DRAWN BY:

CAP

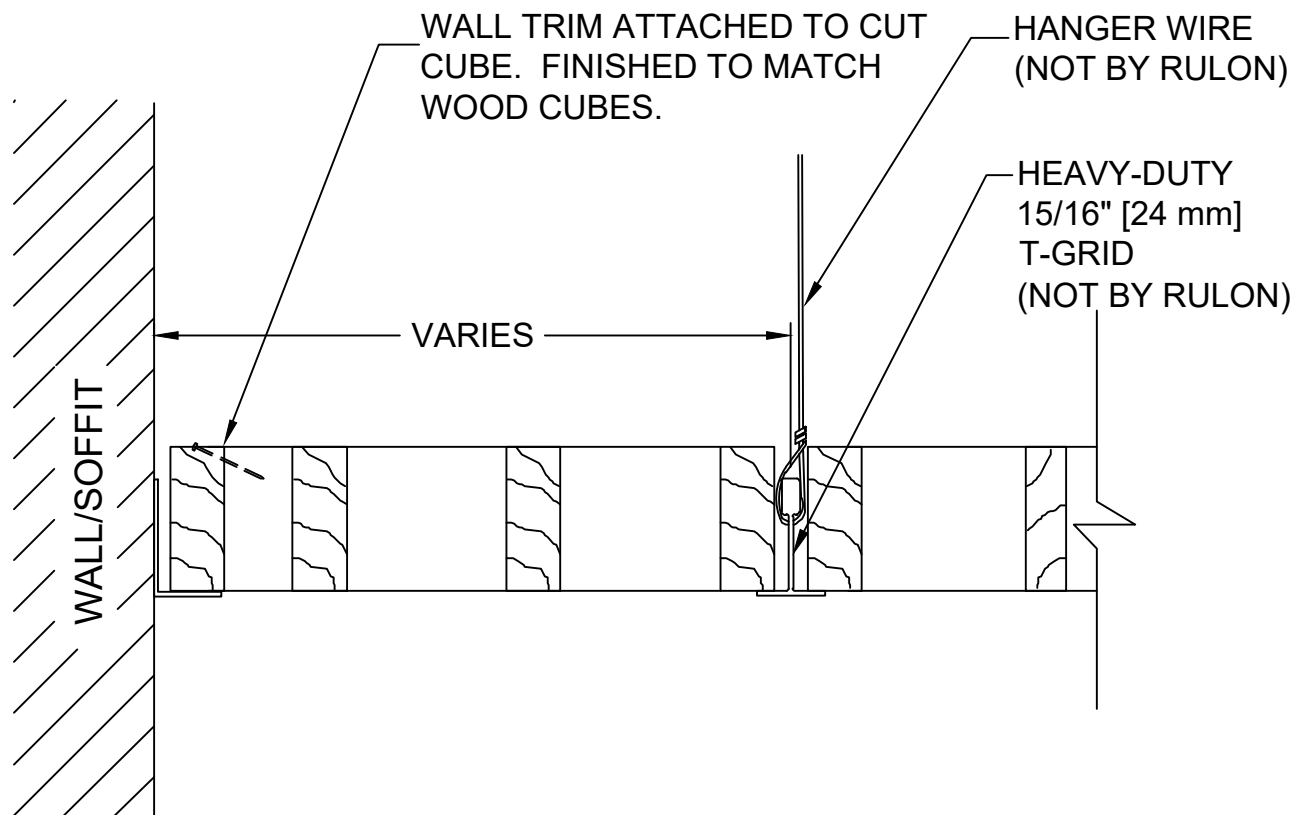
CHECKED BY:

JD

PROJECT NUMBER:

DRAWING NUMBER:

CML00005



RULON INTERNATIONAL
2000 Ring Way
St. Augustine, FL 32092

(904) 584-1400
info@rulonco.com
www.rulonco.com

PROJECT:

TITLE: Lay-in Modular Cube Ceiling
Perimeter Condition

ISSUE DATE:

REVISION DATE:
MAR/14/2019

DRAWN BY:

CAP

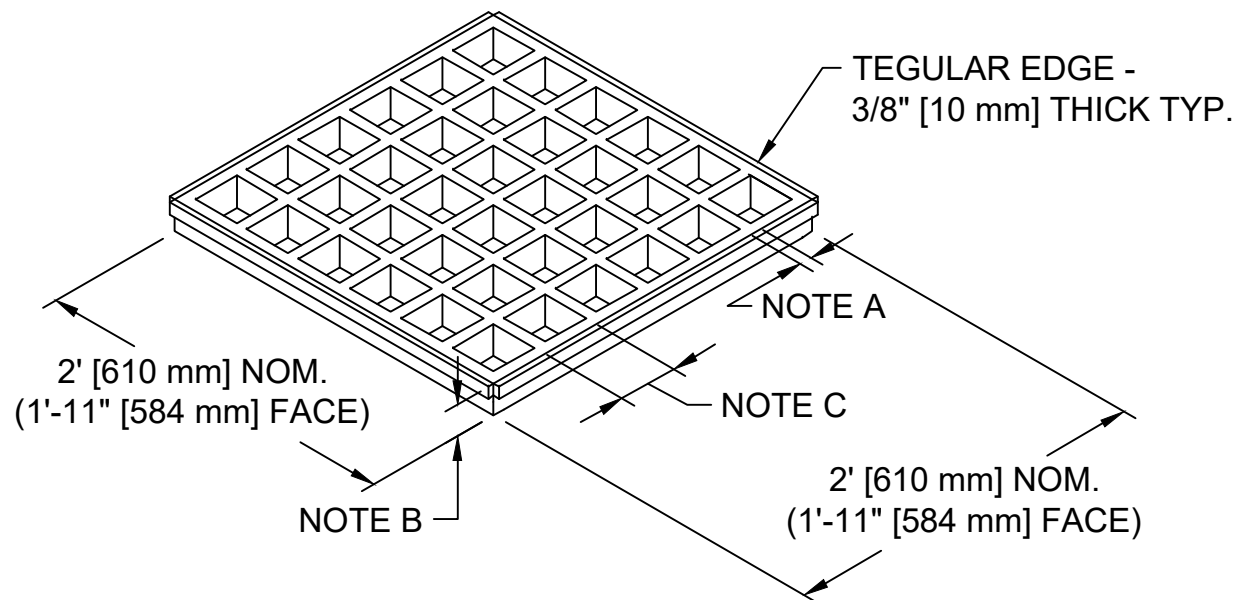
CHECKED BY:

JD

PROJECT NUMBER:

DRAWING NUMBER:

CML00006



NOTES:

A) STRIP THICKNESS: 3/4" [19 mm]

B) CUBE DEPTH: 2" [51 mm], 3" [76 mm], 4" [102 mm]

C) CELL SIZE: 3" X 3" (±2" CLEAR); 4" X 4" (±3" CLEAR) 6" X 6" (±5" CLEAR); 8" X 8" (±7" CLEAR)



RULON INTERNATIONAL
2000 Ring Way
St. Augustine, FL 32092

(904) 584-1400
info@rulonco.com
www.rulonco.com

PROJECT:

TITLE: Tegular Recessed Modular Style
Wood Cube Ceiling Profile - 2'
[610 mm] x 2' [610 mm] Panel

ISSUE DATE:

REVISION DATE:
JUL/18/2022

DRAWN BY:

CAP

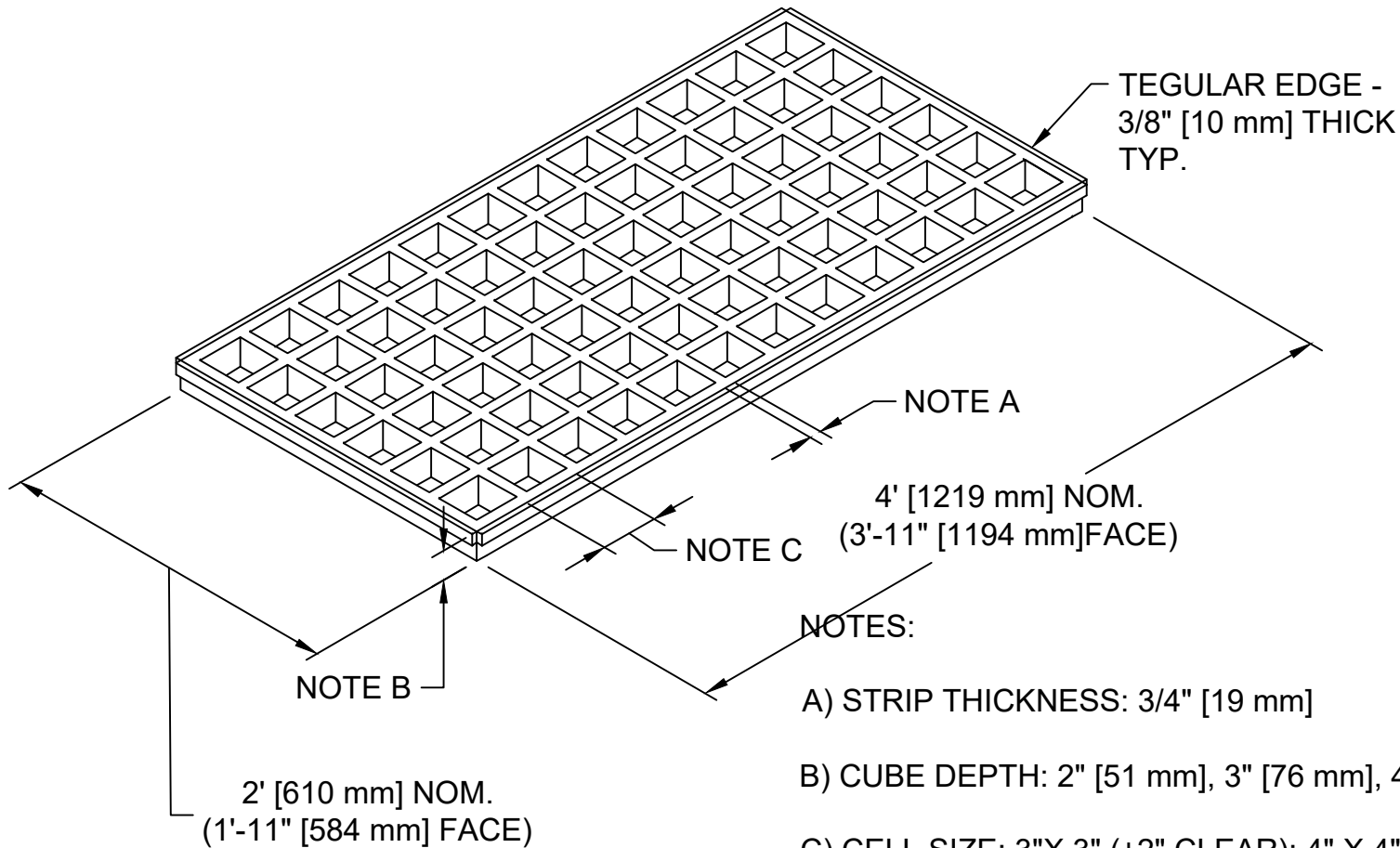
CHECKED BY:

TDA

PROJECT NUMBER:

DRAWING NUMBER:

CMT00001



RULON INTERNATIONAL
2000 Ring Way
St. Augustine, FL 32092

(904) 584-1400
info@rulonco.com
www.rulonco.com

PROJECT:

TITLE: Tegular Recessed Modular Style
Wood Cube Ceiling Profile - 2'
[610 mm] x 4' [1219 mm] Panel

ISSUE DATE:

REVISION DATE:
JUL/18/2022

DRAWN BY:

CAP

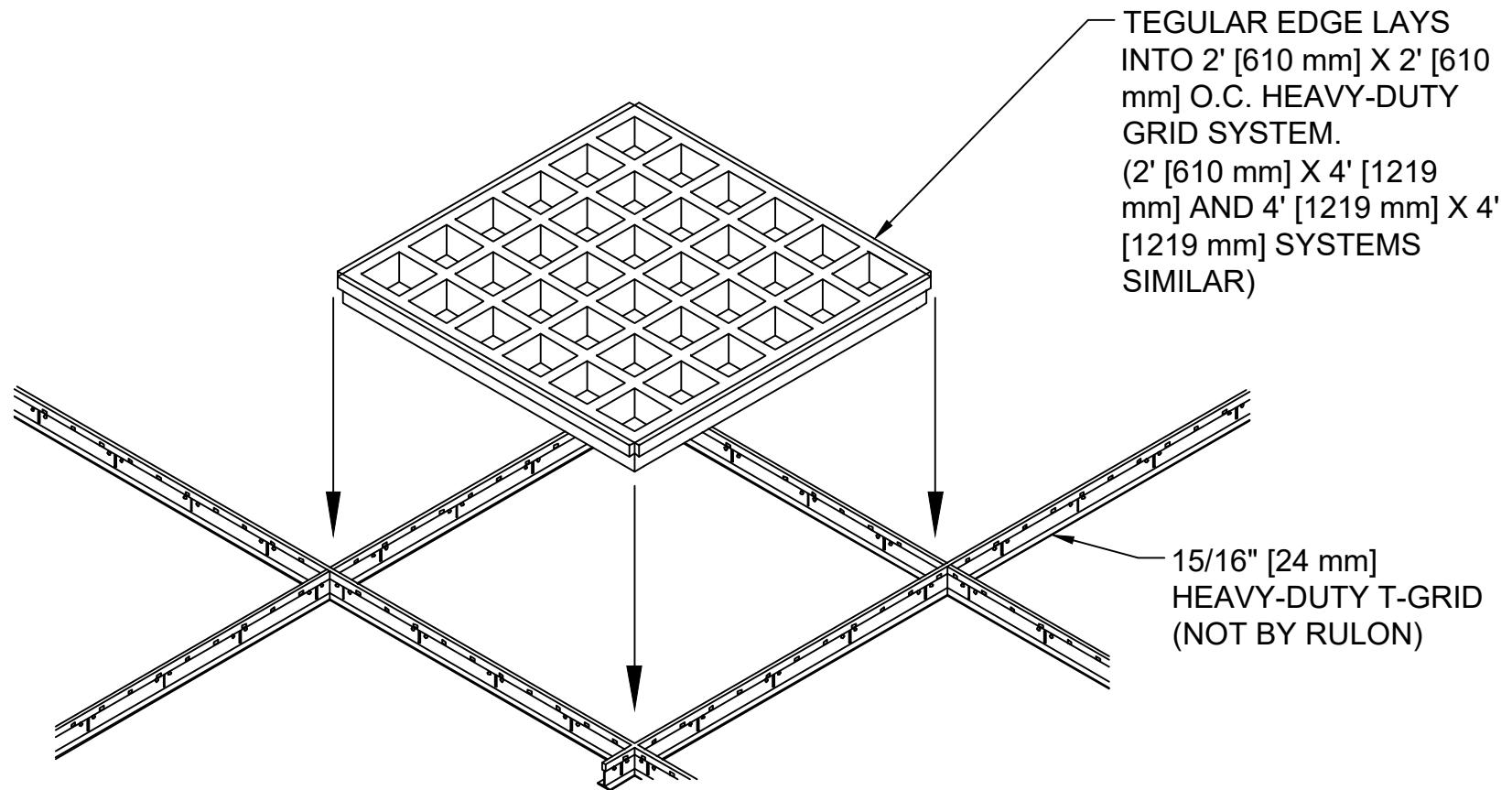
CHECKED BY:

TDA

PROJECT NUMBER:

DRAWING NUMBER:

CMT00002



RULON INTERNATIONAL
2000 Ring Way
St. Augustine, FL 32092

(904) 584-1400
info@rulonco.com
www.rulonco.com

PROJECT:

TITLE: Tegular Recessed Modular Cube
Ceiling Installation Detail

ISSUE DATE:

REVISION DATE:
MAR/14/2019

DRAWN BY:

CAP

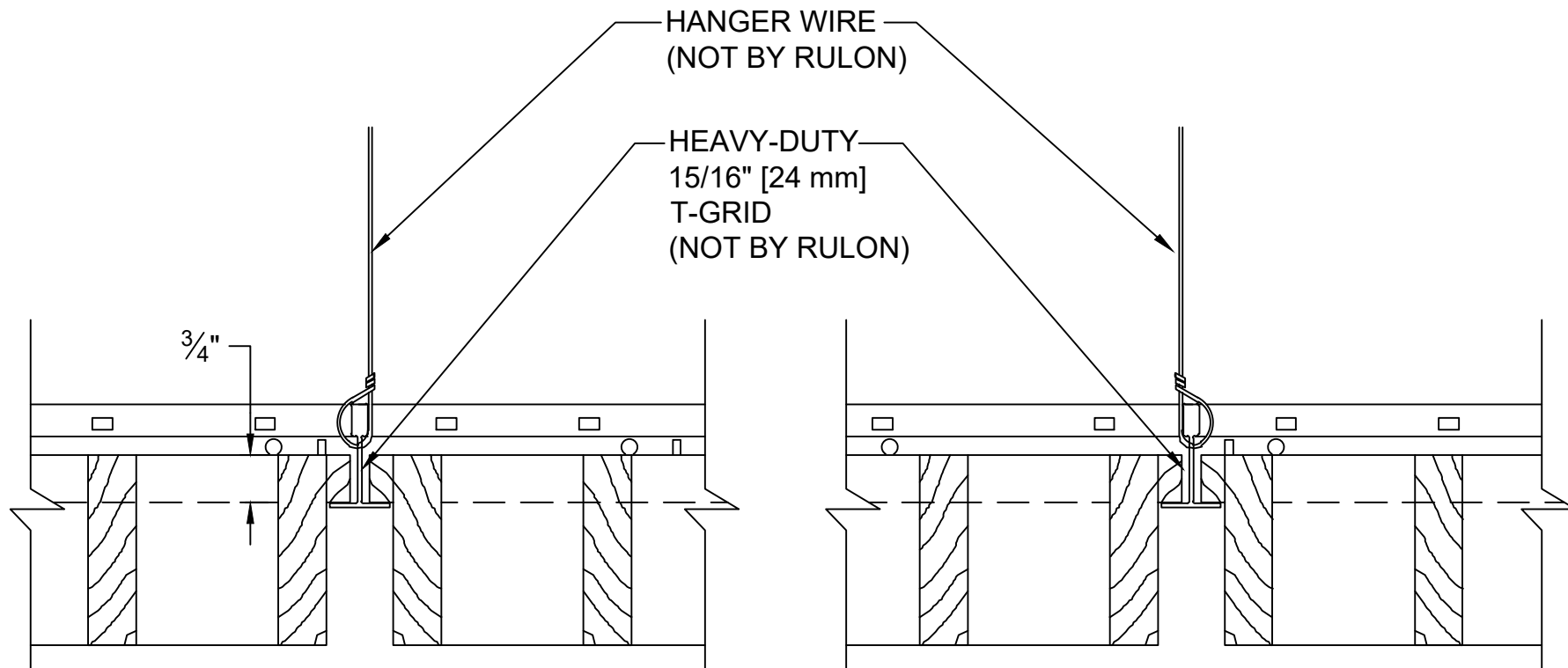
CHECKED BY:

JD

PROJECT NUMBER:

DRAWING NUMBER:

CMT00004



RULON INTERNATIONAL
2000 Ring Way
St. Augustine, FL 32092

(904) 584-1400
info@rulonco.com
www.rulonco.com

PROJECT:

TITLE: Tegular Recessed Modular Cube
Ceiling Suspension Detail

ISSUE DATE:

REVISION DATE:
MAR/14/2019

DRAWN BY:

CAP

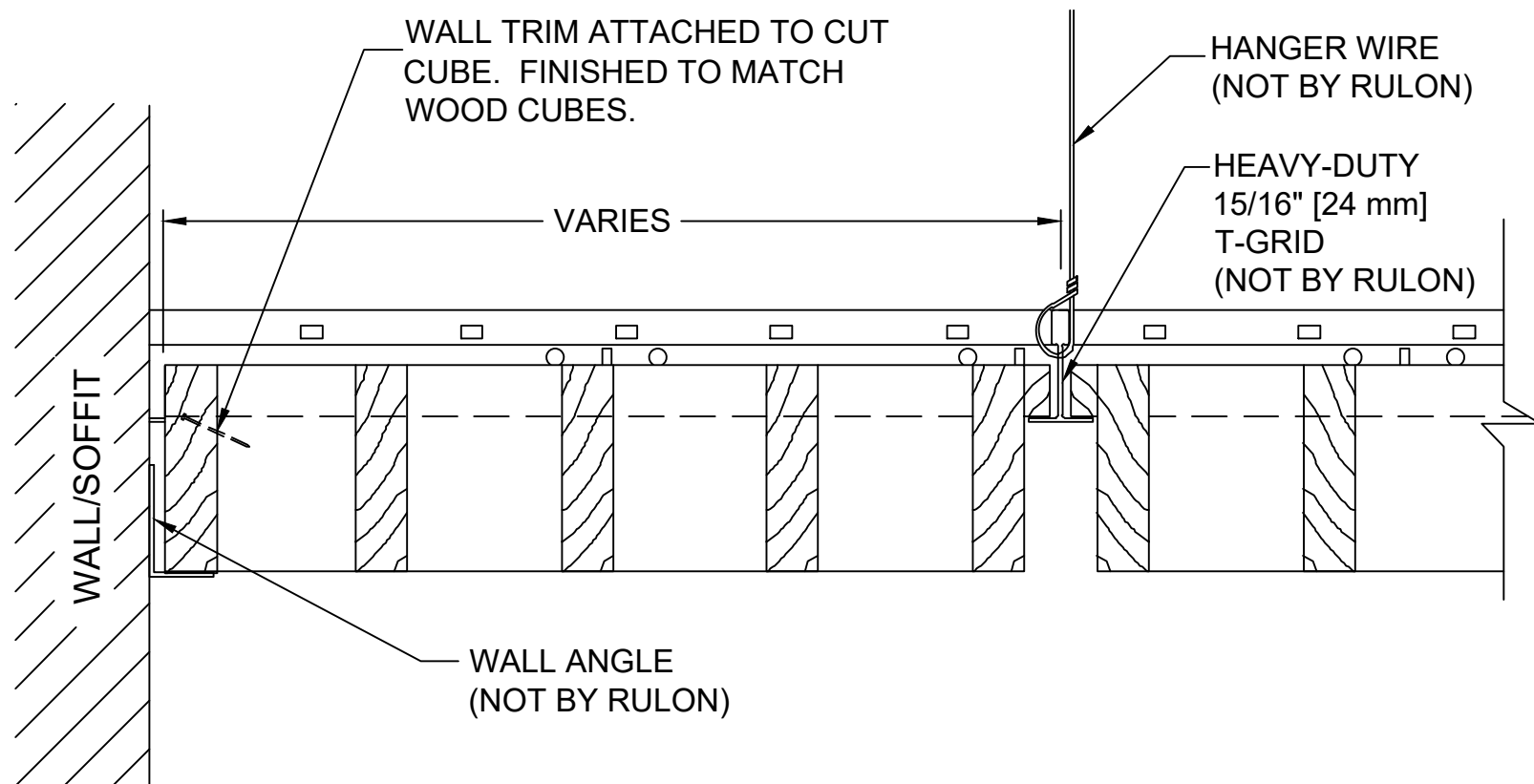
CHECKED BY:

JD

PROJECT NUMBER:

DRAWING NUMBER:

CMT00005



RULON INTERNATIONAL
2000 Ring Way
St. Augustine, FL 32092

(904) 584-1400
info@rulonco.com
www.rulonco.com

PROJECT:

TITLE: Tegular Recessed Modular Cube
Ceiling Perimeter Condition

ISSUE DATE:

REVISION DATE:
MAR/14/2019

DRAWN BY:

CAP

CHECKED BY:

JD

PROJECT NUMBER:

DRAWING NUMBER:

CMT00006