



Endure Linear 960
WALLS
Installation Guide

Rulon Endure 960 Linear WALLS Installation Guide

0

Receipt and Storage:

- a. All material shall be delivered to the project site in the original, labeled, unopened packages.
- b. Material shall be stored flat and level in a secured area, preferably in the room in which they are to be installed.
- c. Care in handling must be exercised to avoid damage.

Before You Begin Installation:

- a. Ensure that all necessary tools are available (see below)
- b. Check Wall components to ensure all items required are at hand (see Page 2)
- c. Review this guide in its entirety.
- d. Review shop drawings if they are required for the installation.
- e. Some projects receive more than one length of material to optimize yield and minimize waste. Please be sure to check strip location on drawings.

If You Need Further Assistance:

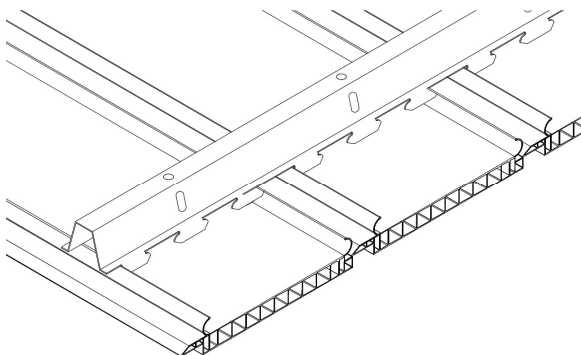
- If you have any questions, or if you encounter a situation not covered by this installation guide, contact the Rulon Engineering Department.
Phone: (904-584-1400)

Tools and Equipment:

- Standard leveling devices
- Hacksaw/Tin snips
- Power miter saw w/ reversed fine tooth blade
- Fast Acting Adhesive
- (NOTE: Take care not to get Adhesive on Woodgrain)
- Standard Contractor's tools

NOTE:

Call the Rulon Engineering Department for clarification of Endure installation or for special conditions such as pools, gyms, exterior installations etc.



Endure Linear #960 Strips Shown

Wall Components:

Supplied by Rulon:

- #960 Wall Strips
- #880 Carriers
- #890 Carrier Connectors
- #850S Splicing Material
- #870 Perimeter Trim
- #875 Expansion Joint
(If needed)

Supplied by others:

- Support structure
- Furring
- Fasteners, as needed
- Acoustic blanket (when specified)-
- Fast Acting Adhesive

Rulon Endure 960 Linear WALLS Installation Guide

0

- Endure™ 960 should not be installed where it will be exposed to direct radiant heat sources including heaters or equipment that operate above normal ambient temperatures. Such conditions may exceed the product's design limits and compromise performance or stability.

Step 1: Wall Preparation

Ensure endure carries have a structural mounting surface, install furring if Endure 960 strips are running horizontally (vertical carriers). If strips run vertically, direct attach carrier to studs.

Step 2: Carrier Placement

Mark Carrier locations, as specified. Carriers spacing should not exceed 2' [610 mm] for walls. Carriers shall be screwed in place starting 6" [152 mm] from one perimeter, and ending within 6" [152 mm] of the opposite perimeter. Carriers shall run perpendicular to the direction of the Endure wall strips.

Ensure carrier holding tabs are in alignment from carrier to carrier.

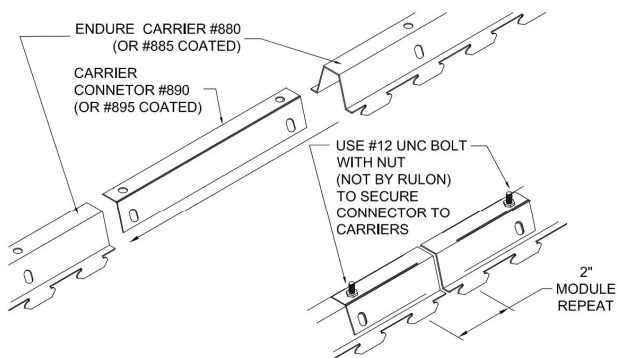
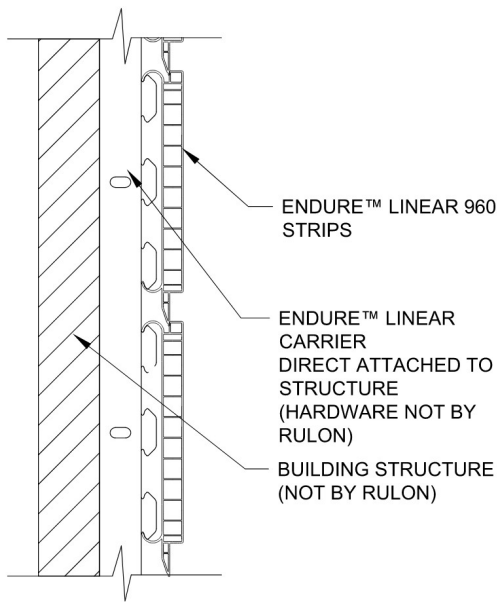
Check clearances prior to installation of carriers – shims may need to be incorporated to make room for eventual installation of perimeter trim.

Step 3: Extending Endure Carrier

At junctions between carriers, insert one #890 or #895(coated) carrier connector. Attach carrier connector inside carriers as shown. Stagger locations of splice.

Note:

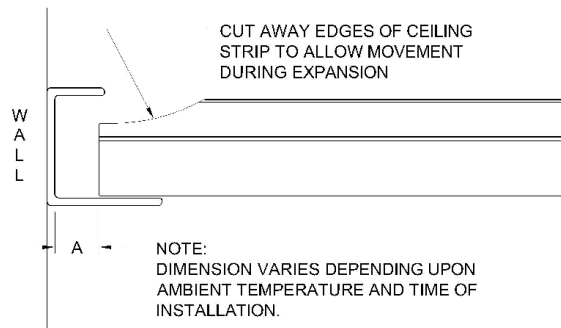
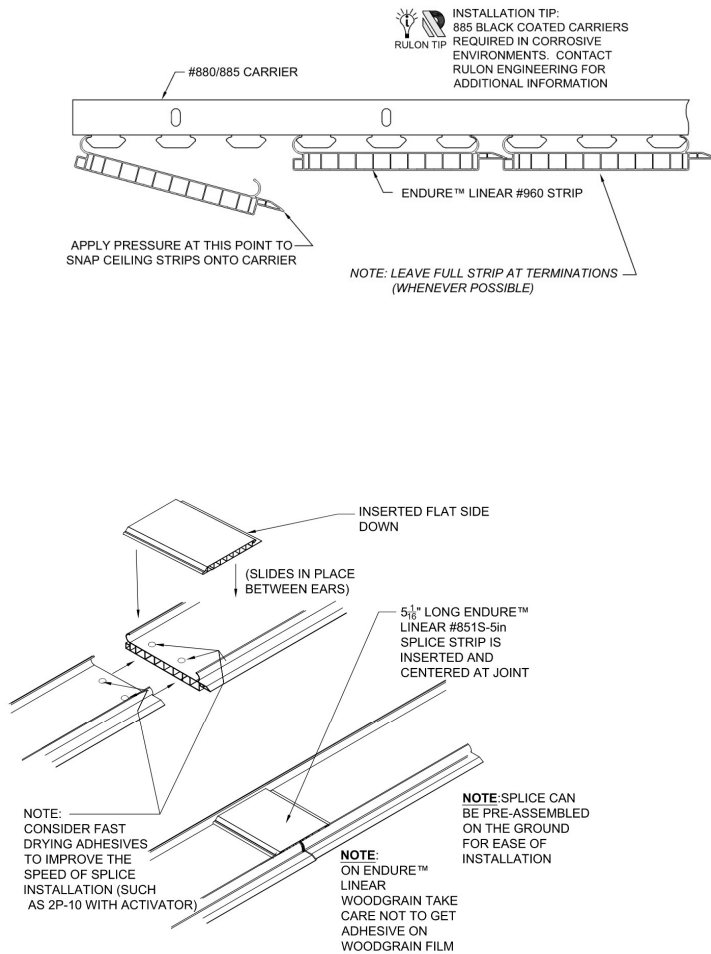
Carrier connector is for alignment only. Support carrier as needed near splice.



INSTALLATION TIP:
CARRIER CONNECTOR IS DESIGNED TO BE POSITIONED INSIDE (AS SHOWN) OR OUTSIDE OF THE CARRIER; ATTACHED THROUGH HOLES IN TOP (AS SHOWN) OR SIDES

Rulon Endure 960 Linear WALLS Installation Guide

0



Step 4: Endure Strip Attachment

Beginning at one wall, connect the #960 Wall Strips to the carrier, in sequence. If acoustical blankets are to be installed, they should be placed behind the wall, as the installation progresses. MEP'S should also be supported independently and cut-in as the wall is installed.

Step 5: Wall Strip Splices

When it is necessary to continue ceiling strips, align strip ends by placing a piece of #850S splice strip inverted, and centered, behind the #960 ceiling strips. This should be done when the strip is installed, prior to the installation of adjacent strips. Fast acting adhesive shall be used to secure the splice pieces. Ensure adhesive does not contact visible surfaces.

Note:

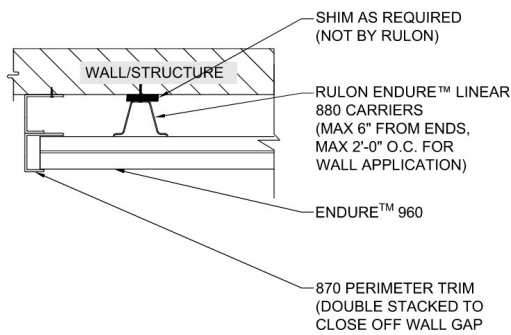
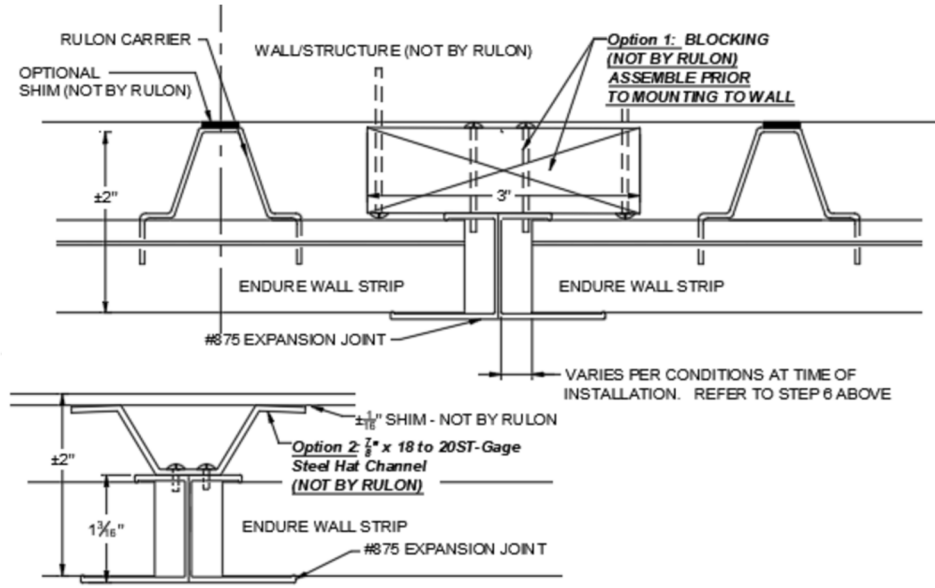
Field cut all strips with a power miter saw. Use a fine-tooth blade for best results. Field check all strips (INCLUDING FULL LENGTH STRIPS) for a 90-degree cut end. Trim as necessary to ensure flush butt joints. For best results, overlap strips and cut at the same time before splicing two strips together.

Step 6: Allowance for Expansion

Trim Endure strips at perimeter to allow for expansion and contraction. Dimension 'A' varies between ¼" [6 mm] and ½" [13 mm] for an 18' [5486 mm] long Endure wall, depending upon installation temperature. **Contact the Rulon Engineering Department for Clarification.**

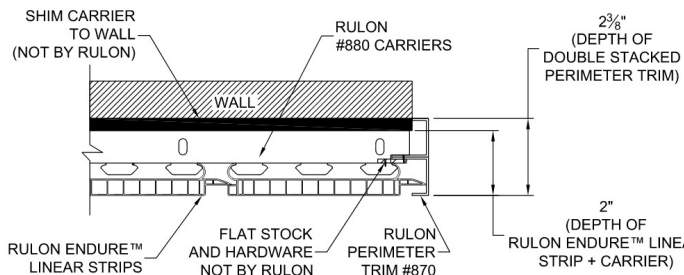
Rulon Endure 960 Linear WALLS Installation Guide

0



Step 7: Optional open end

Open ends or corners may be achieved using #870 perimeter trim to conceal the field-cut ends. See detail to the left for reference.



Step 8: Adjustment, Cleaning, and Repair

- The contractor shall make final adjustments to level or contours.
- Upon completion of the wall installation, the contractor shall clean all Endure strips and borders of dirt, dust, grease, oils, fingerprints, etc. using warm, soapy water – followed by a rinse.
- All work that cannot be successfully cleaned and repaired shall be removed & replaced.