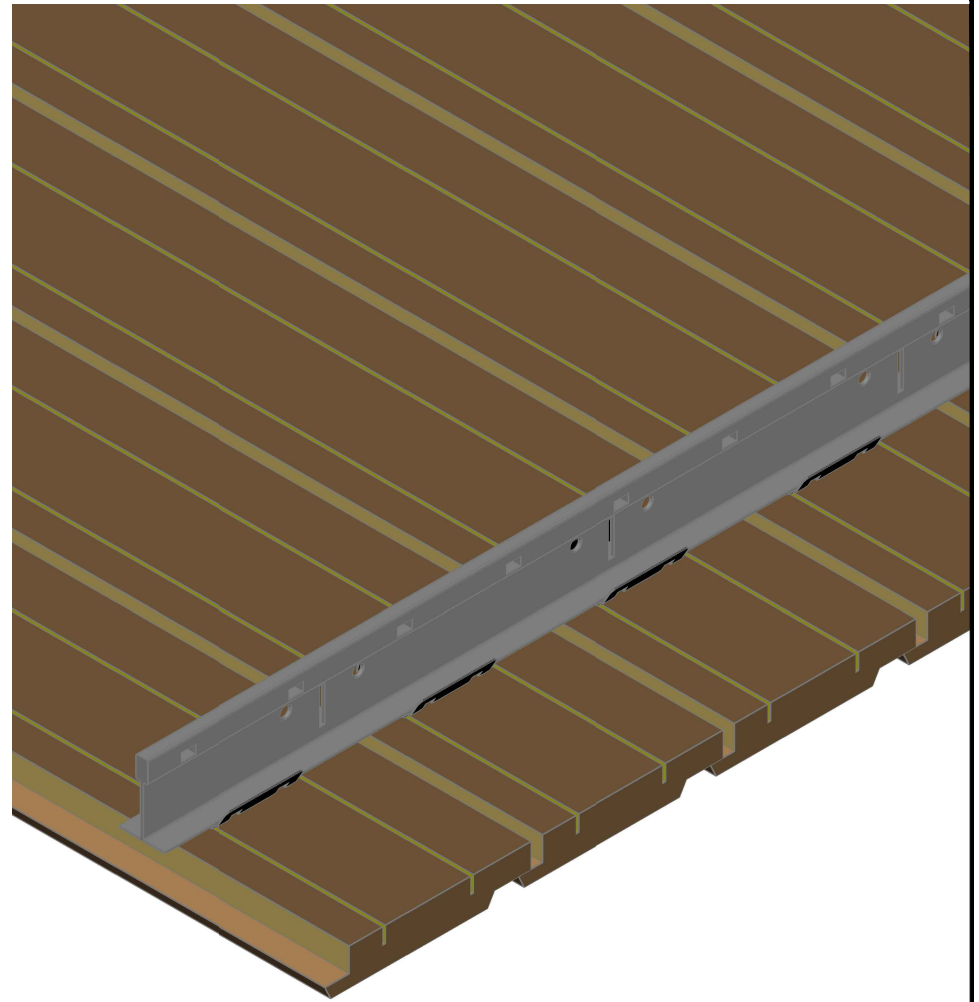


<u>DRAWING #</u>	<u>TITLE</u>
LCC4N001	Linear Closed Ceiling Profile - 4" [102 mm] Module
LCC4N002	Ceiling Board Installation Method - Linear Closed Style
LCC4N003	Cliprail Installation Detail - Linear Closed Style
LCC4N004	Perimeter Detail - Linear Closed Style
LCC4N005	Board Connection Detail - Linear Closed Style
LCC4N006	Access Panel Detail - Linear Closed Style
LCC4N007	Sprinkler Detail - Linear Closed Style
LCC4N008	Recessed Can Light Detail - Linear Closed Style
LCC4N009	Strip Light Fixture Detail - Linear Closed Style
LCC4N011	Seismic Detail - Linear Closed Style
LCC4N013	Cliprail Radius Detail - Linear Closed Style
LCC4N015	Direct Mounting Detail - Ceiling - L-Bracket Method - Linear Closed Style



RULON INTERNATIONAL
2000 Ring Way
St. Augustine, FL 32092

(904) 584-1400
info @ rulonco.com

www.rulonco.com

PROJECT:

TITLE: **Linear Closed Style Index**

ISSUE DATE:

REVISION DATE:
MAR/14/2019

DRAWN BY:

CAP

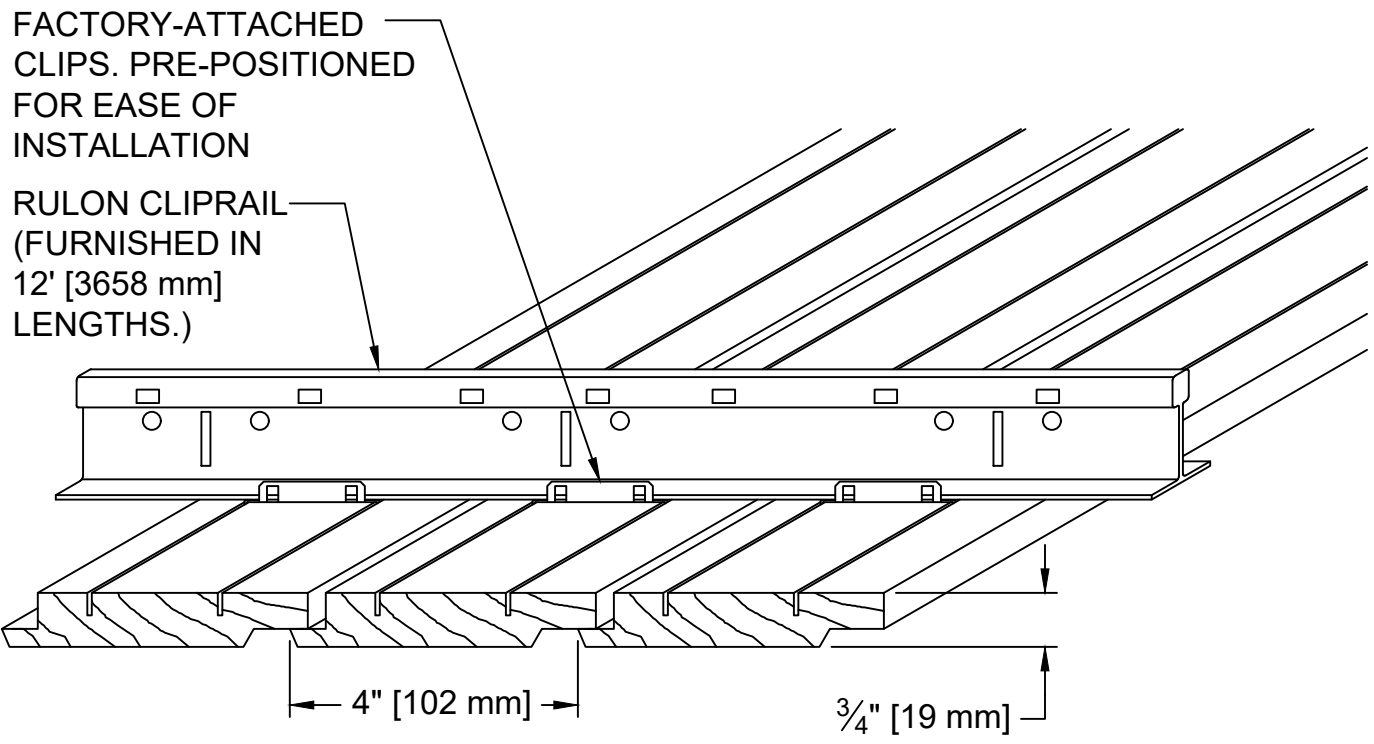
CHECKED BY:

TA

PROJECT NUMBER:

DRAWING NUMBER:

LCCINDEX

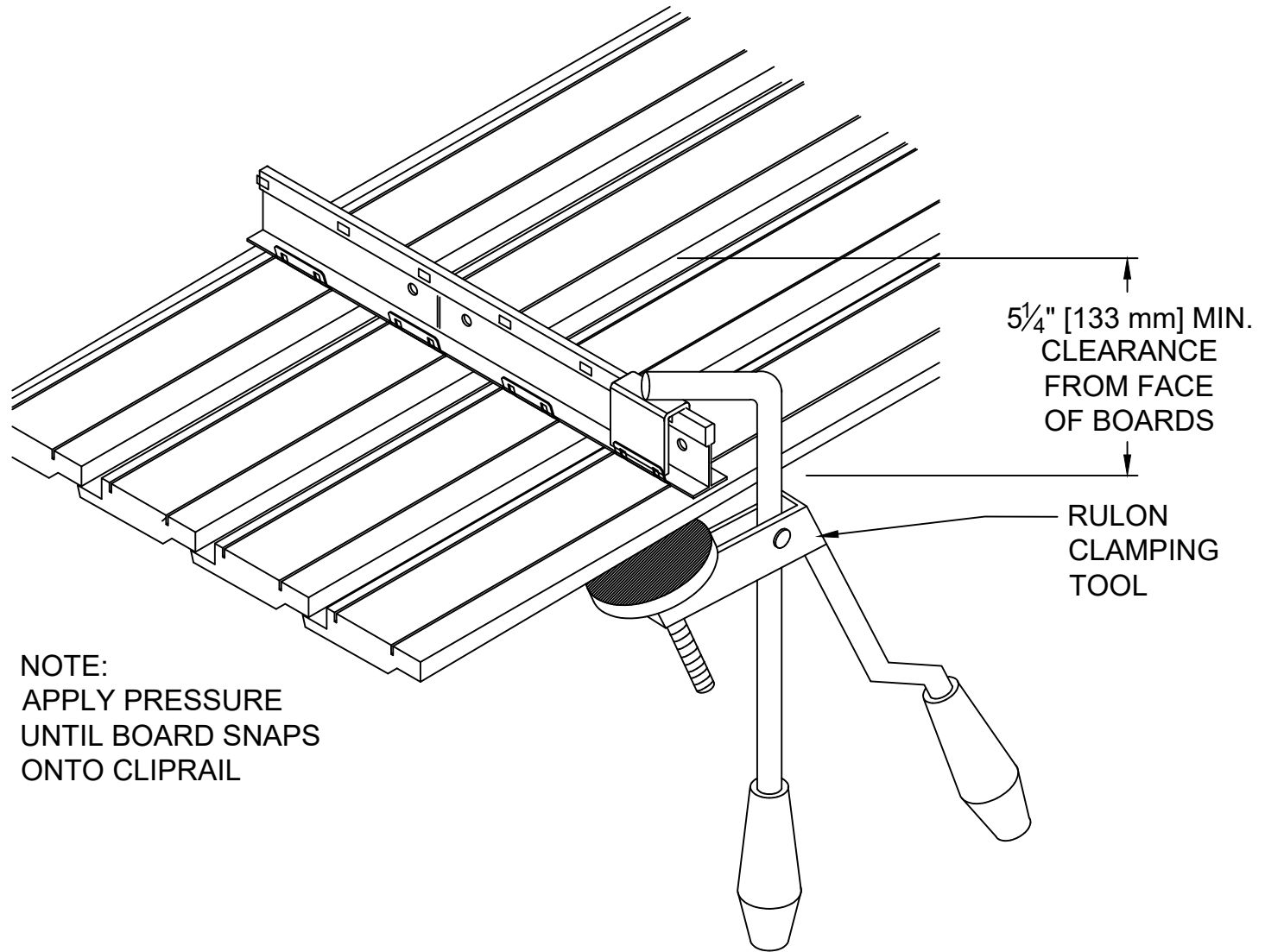


RULON INTERNATIONAL
 2000 Ring Way
 St. Augustine, FL 32092

(904) 584-1400
 info @ rulonco.com

www.rulonco.com

PROJECT:	ISSUE DATE:	DRAWN BY: CAP	PROJECT NUMBER:
TITLE: Linear Closed Ceiling Profile - 4" [102 mm] Module	REVISION DATE: MAR/14/2019	CHECKED BY: TA	DRAWING NUMBER: LCC4N001



RULON INTERNATIONAL
2000 Ring Way
St. Augustine, FL 32092

(904) 584-1400
info @ rulonco.com

www.rulonco.com

PROJECT:

TITLE: **Ceiling Board Installation Detail -
Linear Closed Style**

ISSUE DATE:

REVISION DATE:
MAR/14/2019

DRAWN BY:

CAP

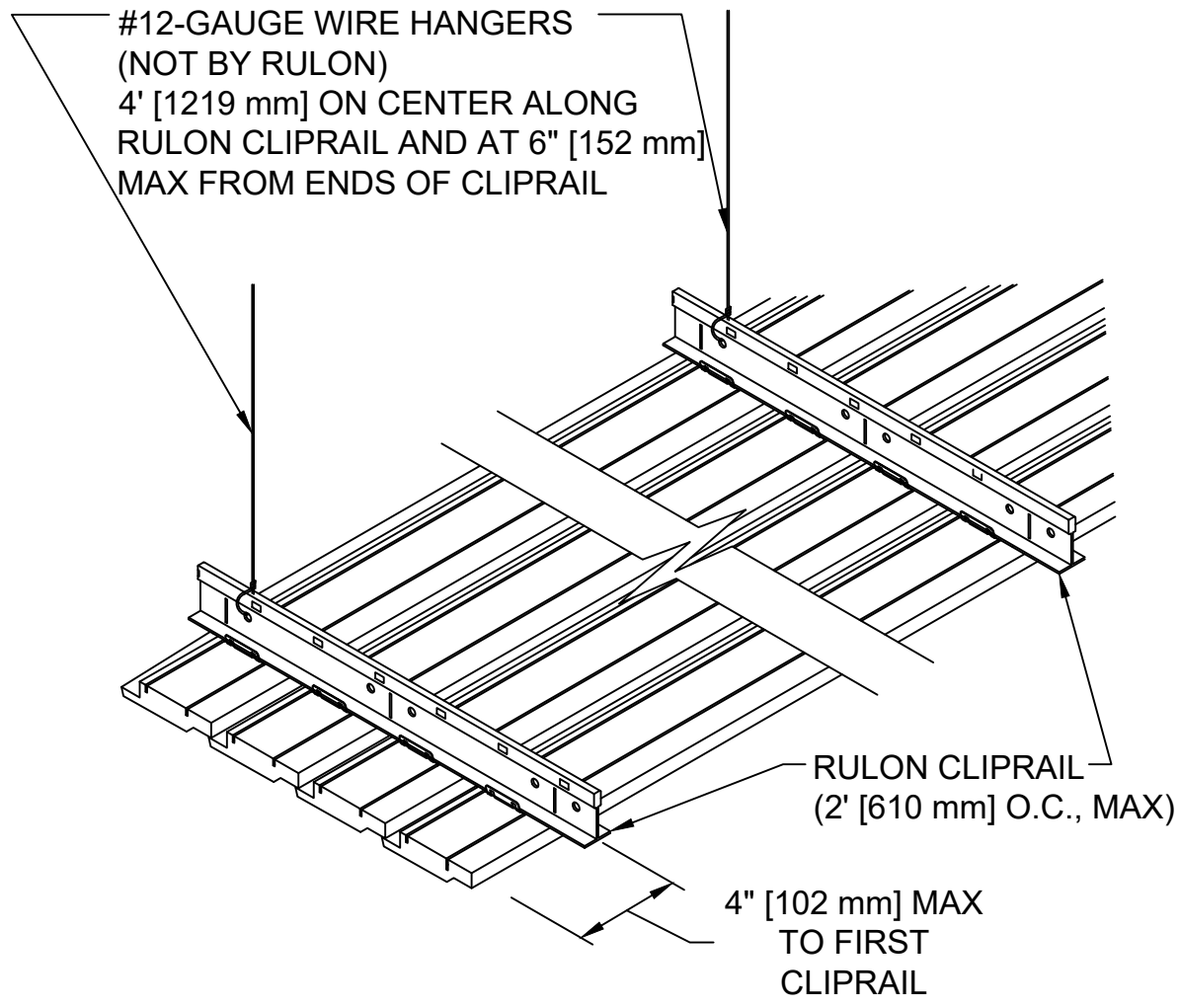
CHECKED BY:

TA

PROJECT NUMBER:

DRAWING NUMBER:

LCC4N002



RULON INTERNATIONAL
2000 Ring Way
St. Augustine, FL 32092

(904) 584-1400
info @ rulonco.com

www.rulonco.com

PROJECT:

TITLE: **Cliprail Installation Detail - Linear
Closed Style**

ISSUE DATE:

REVISION DATE:
MAR/14/2019

DRAWN BY:

CAP

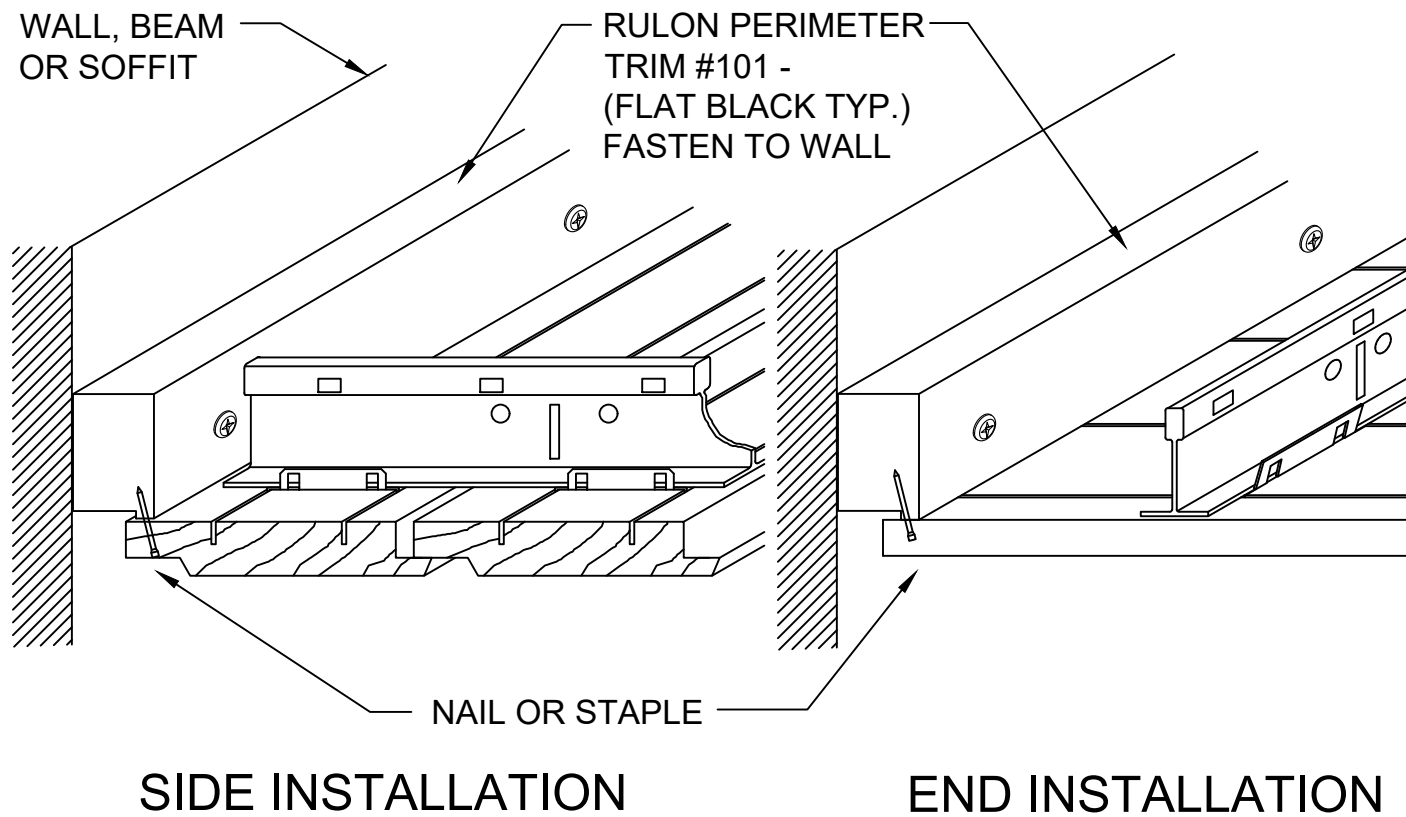
CHECKED BY:

TA

PROJECT NUMBER:

DRAWING NUMBER:

LCC4N003



RULON INTERNATIONAL
2000 Ring Way
St. Augustine, FL 32092

(904) 584-1400
info @ rulonco.com

www.rulonco.com

PROJECT:

TITLE: **Perimeter Detail -
Linear Closed Style**

ISSUE DATE:

REVISION DATE:
MAR/14/2019

DRAWN BY:

CAP

CHECKED BY:

TA

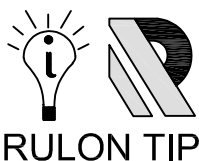
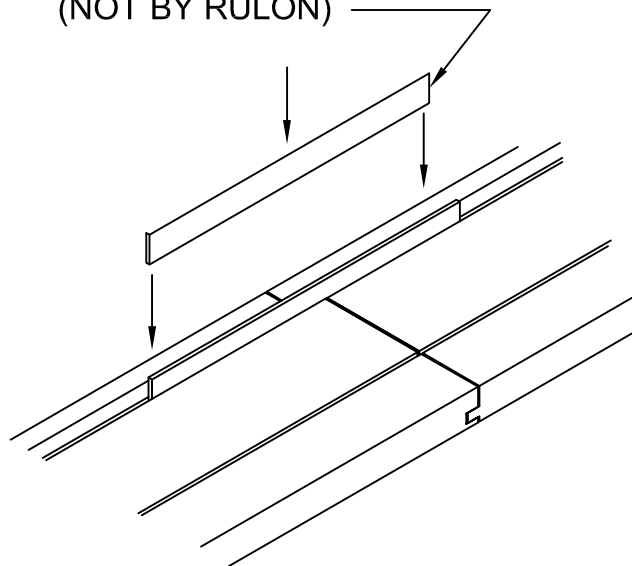
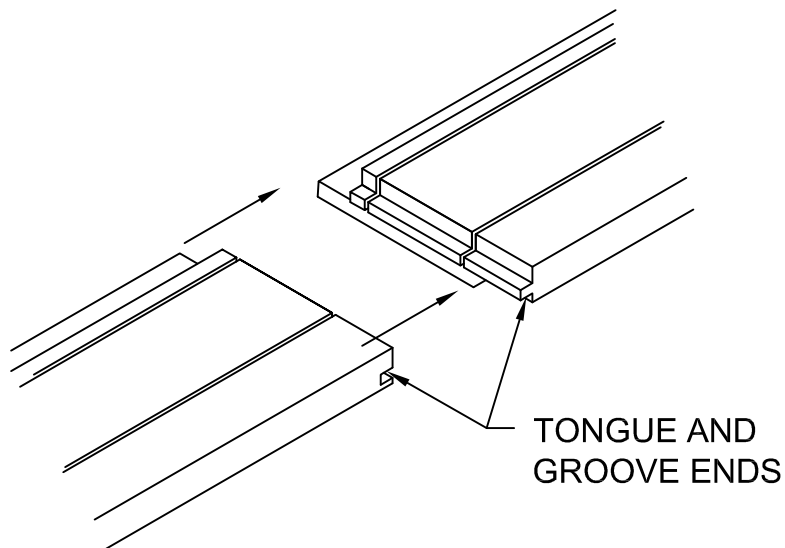
PROJECT NUMBER:

DRAWING NUMBER:

LCC4N004

NOTE: TONGUE AND GROOVE BOARDS ARE FURNISHED IN RANDOM LENGTHS. STAGGER T&G JOINTS THROUGHOUT.

$\frac{1}{16}$ " [2 mm] THICK STEEL STRIP OR ROUND WIRE WIRE SHOULD BE INSERTED INTO SLOT ON BACK OF CEILING BOARD AT T&G END JOINTS TO HELP BOARD ALIGNMENT (NOT BY RULON)



INSTALLATION TIP:
 ONLY ONE (1) STEEL STRIP OR WIRE PIECE IS NEEDED AT EACH CONNECTION. INSTALL WITH CLAMPING TOOL. A FINISH NAIL MAY ALSO BE USED.



RULON INTERNATIONAL
 2000 Ring Way
 St. Augustine, FL 32092

(904) 584-1400
 info @ rulonco.com

www.rulonco.com

PROJECT:

TITLE: **Board Connection Detail -
 Linear Closed Style**

ISSUE DATE:

REVISION DATE:
JUL/21/2023

DRAWN BY:

CAP

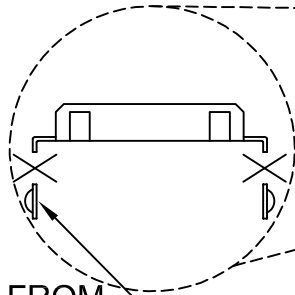
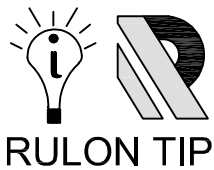
CHECKED BY:

TDA

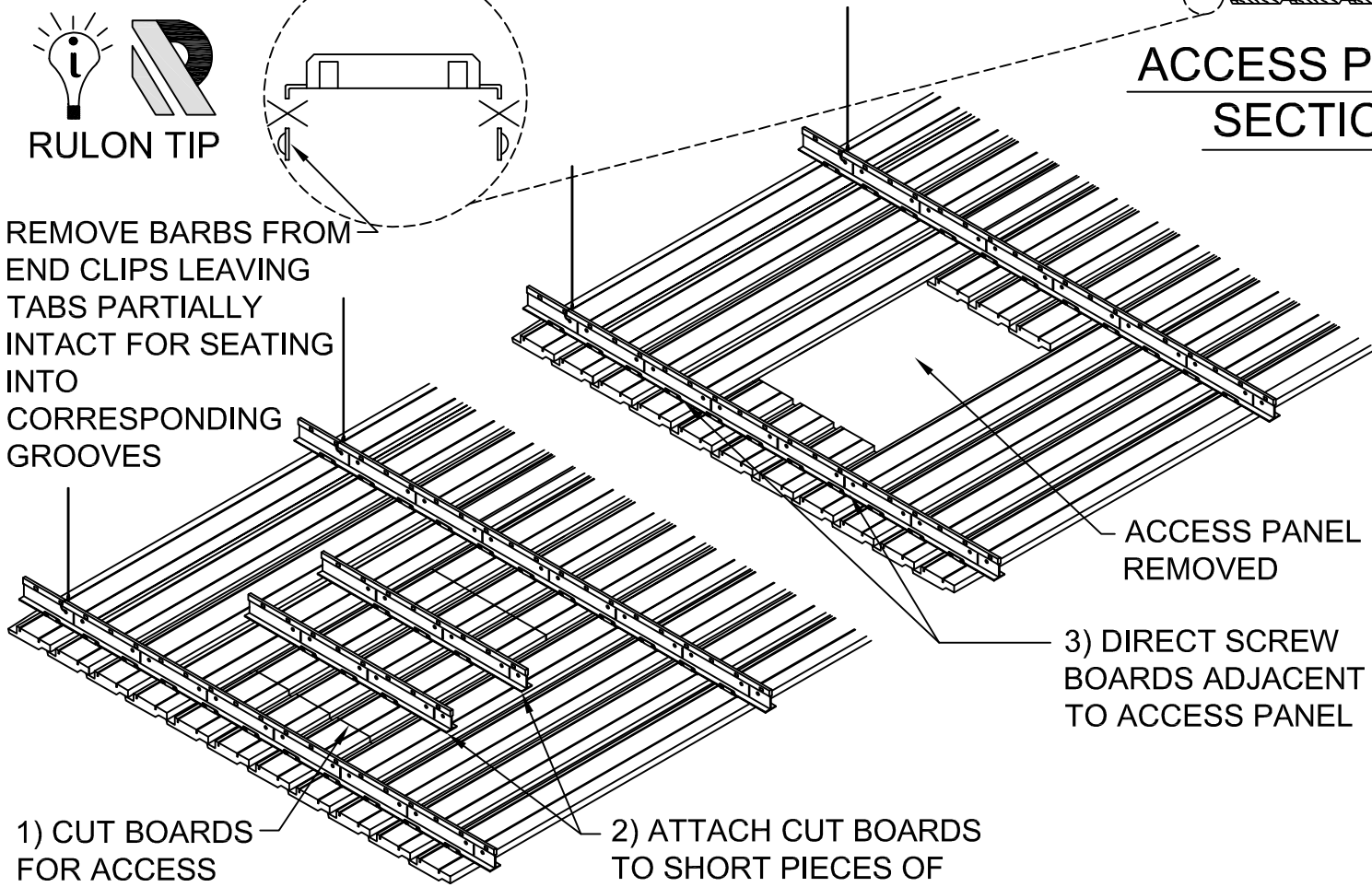
PROJECT NUMBER:

DRAWING NUMBER:

LCC4N005



REMOVE BARBS FROM
END CLIPS LEAVING
TABS PARTIALLY
INTACT FOR SEATING
INTO
CORRESPONDING
GROOVES



1) CUT BOARDS
FOR ACCESS
PANEL

2) ATTACH CUT BOARDS
TO SHORT PIECES OF
CLIPRAIL THAT WILL
BRIDGE TO UNCUT CEILING
AREA

3) DIRECT SCREW
BOARDS ADJACENT
TO ACCESS PANEL

ACCESS PANEL
REMOVED



RULON INTERNATIONAL
2000 Ring Way
St. Augustine, FL 32092

(904) 584-1400
info @ rulonco.com

www.rulonco.com

PROJECT:

ISSUE DATE:

DRAWN BY:

PROJECT NUMBER:

CAP

TITLE:

Access Panel Detail -
Linear Closed Style

REVISION DATE:

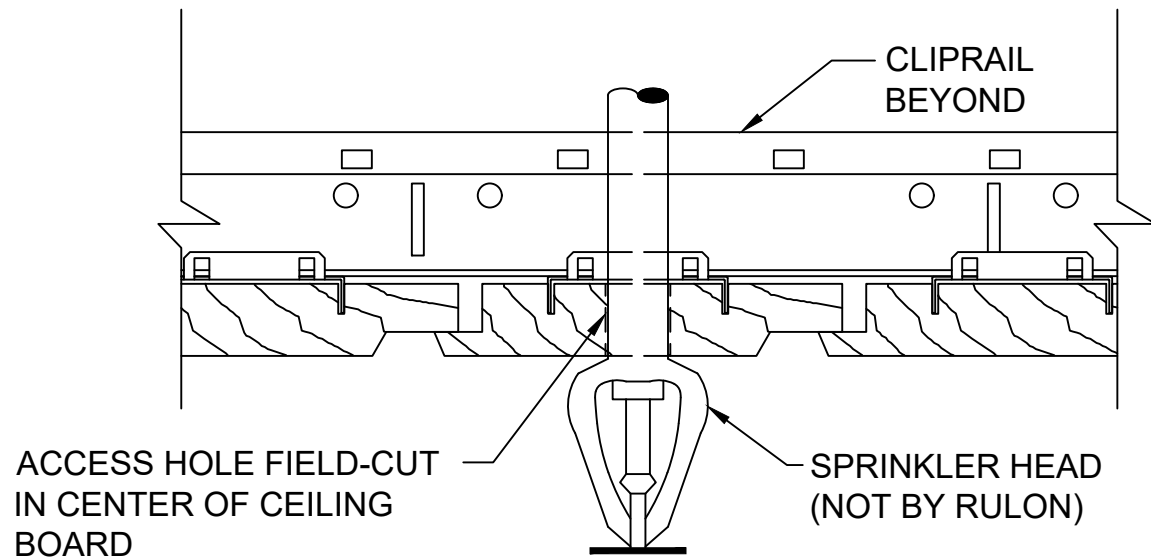
JUL/21/2023

CHECKED BY:

TDA

DRAWING NUMBER:

LCC4N006



RULON INTERNATIONAL
 2000 Ring Way
 St. Augustine, FL 32092

(904) 584-1400
 info @ rulonco.com

www.rulonco.com

PROJECT:

TITLE: **Sprinkler Detail -
 Linear Closed Style**

ISSUE DATE:

REVISION DATE:
MAR/14/2019

DRAWN BY:

CAP

CHECKED BY:

TA

PROJECT NUMBER:

DRAWING NUMBER:

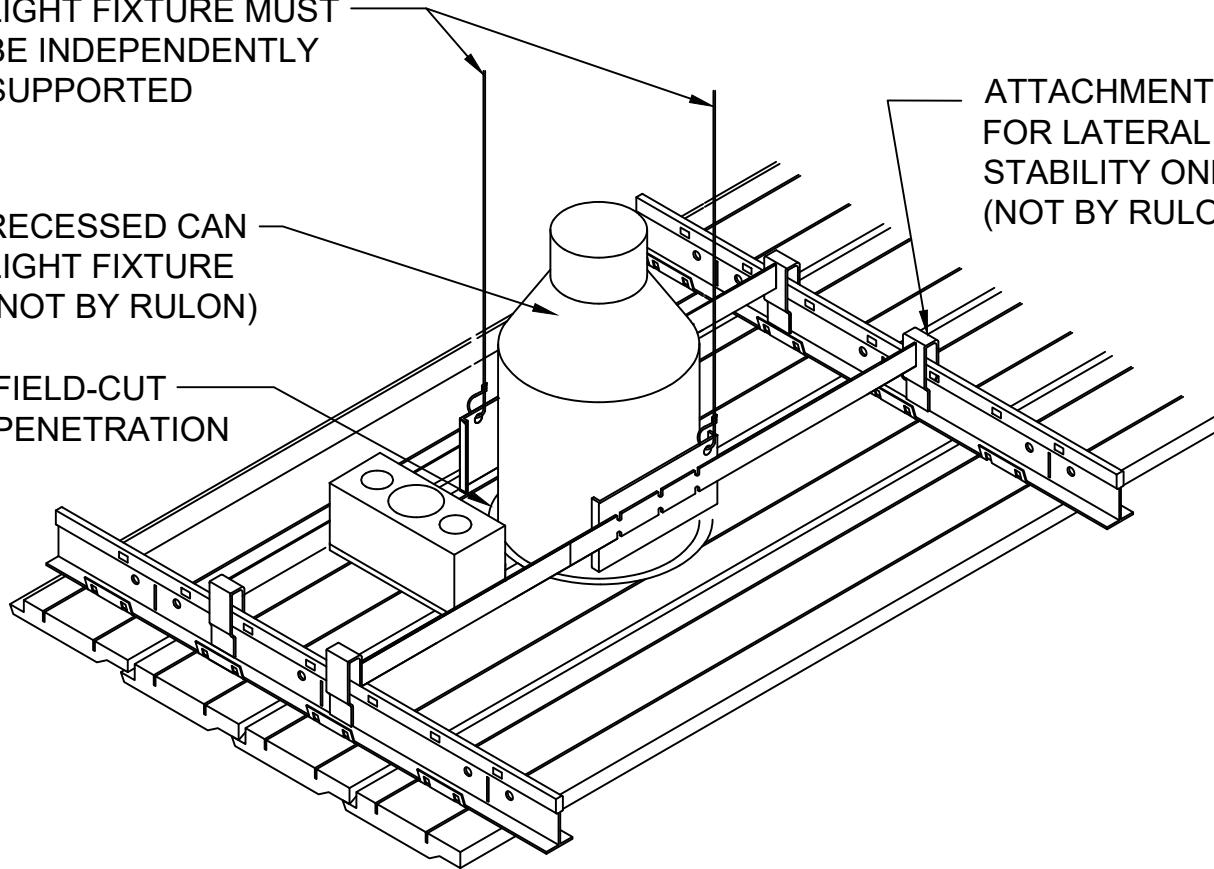
LCC4N007

LIGHT FIXTURE MUST
BE INDEPENDENTLY
SUPPORTED

RECESSED CAN
LIGHT FIXTURE
(NOT BY RULON)

FIELD-CUT
PENETRATION

ATTACHMENT
FOR LATERAL
STABILITY ONLY
(NOT BY RULON)



RULON INTERNATIONAL
2000 Ring Way
St. Augustine, FL 32092

(904) 584-1400
info @ rulonco.com

www.rulonco.com

PROJECT:

TITLE:

Recessed Can Light Detail -
Linear Closed Style

ISSUE DATE:

MAR/14/2019

DRAWN BY:

CAP

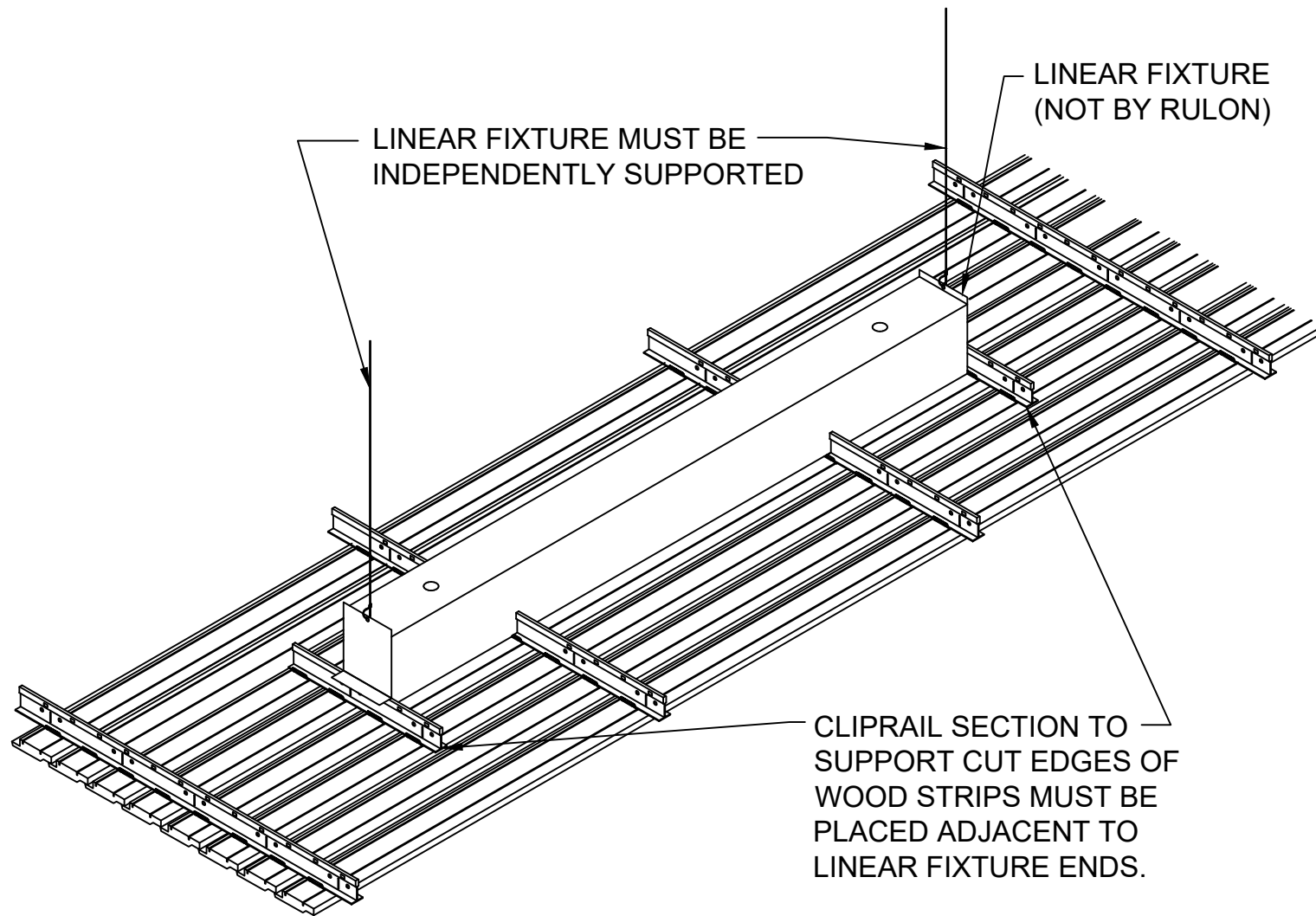
CHECKED BY:

TA

PROJECT NUMBER:

DRAWING NUMBER:

LCC4N008



RULON INTERNATIONAL
 2000 Ring Way
 St. Augustine, FL 32092

(904) 584-1400
 info @ rulonco.com

www.rulonco.com

PROJECT:

TITLE: Strip Light Fixture Detail -
 Linear Closed Style

ISSUE DATE:

REVISION DATE:
 MAR/14/2019

DRAWN BY:

CAP

CHECKED BY:

TA

PROJECT NUMBER:

DRAWING NUMBER:

LCC4N009

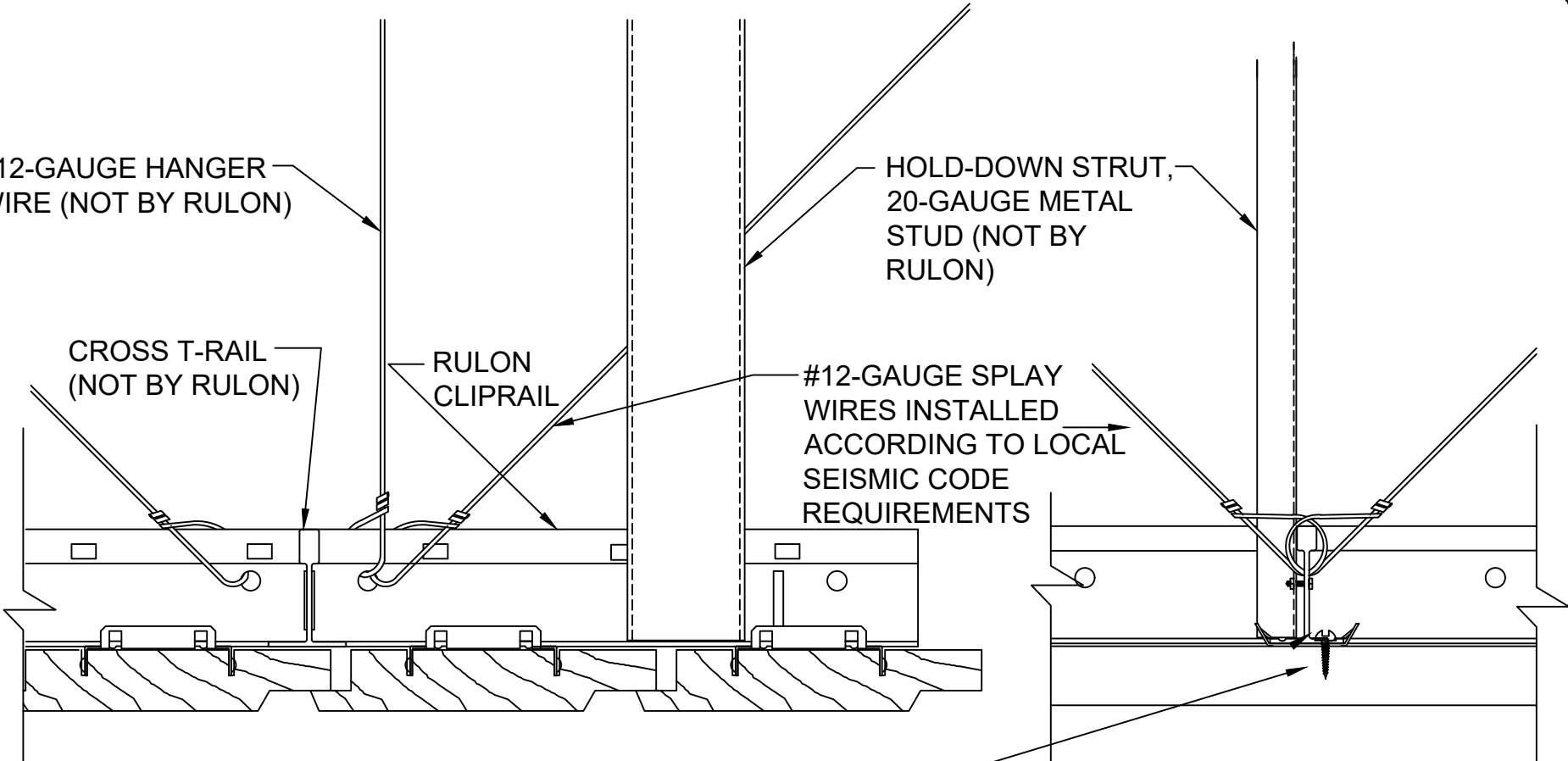
#12-GAUGE HANGER WIRE (NOT BY RULON)

HOLD-DOWN STRUT, 20-GAUGE METAL STUD (NOT BY RULON)

CROSS T-RAIL (NOT BY RULON)

RULON CLIPRAIL

#12-GAUGE SPLAY WIRES INSTALLED ACCORDING TO LOCAL SEISMIC CODE REQUIREMENTS



SECTION THROUGH BOARDS

SECTION THROUGH CLIPRAIL

NOTE: SUSPENSION SYSTEM TO BE INSTALLED ACCORDING TO LOCAL SEISMIC CONDITION CODE REQUIREMENTS (NOT BY RULON)

AT THE CLIP CLOSEST TO THE END OF EACH CEILING BOARD, SCREW THROUGH HOLE PROVIDED IN CLIP INTO CEILING BOARD (BOTH ENDS OF EACH BOARD)



RULON INTERNATIONAL
2000 Ring Way
St. Augustine, FL 32092

(904) 584-1400
info @ rulonco.com

www.rulonco.com

PROJECT:

ISSUE DATE:

DRAWN BY:

PROJECT NUMBER:

CAP

TITLE: **Seismic Detail -
Linear Closed Style**

REVISION DATE:

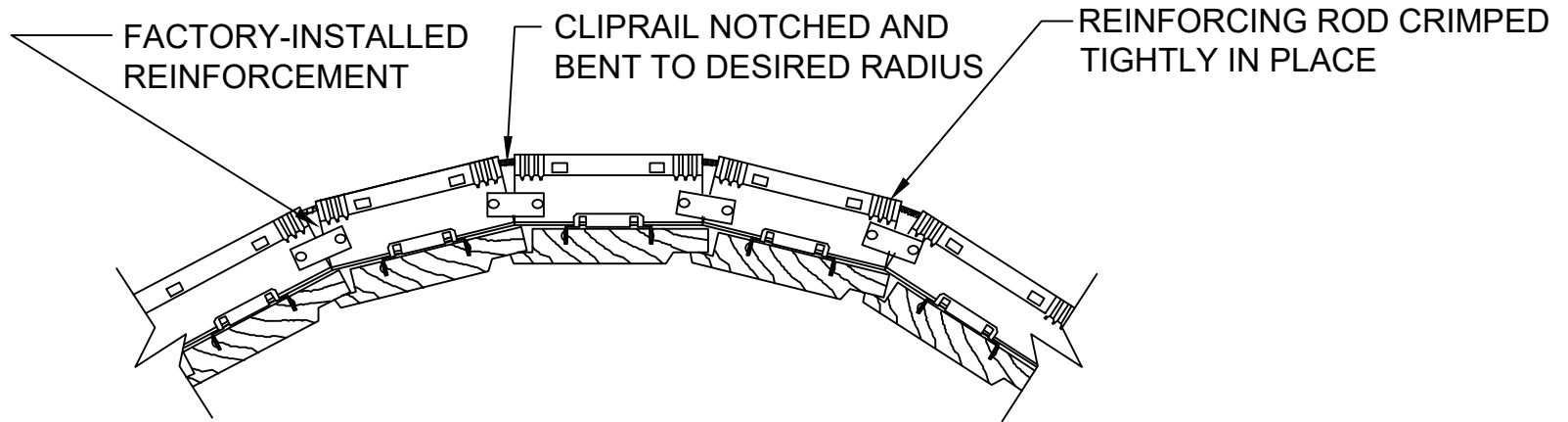
CHECKED BY:

DRAWING NUMBER:

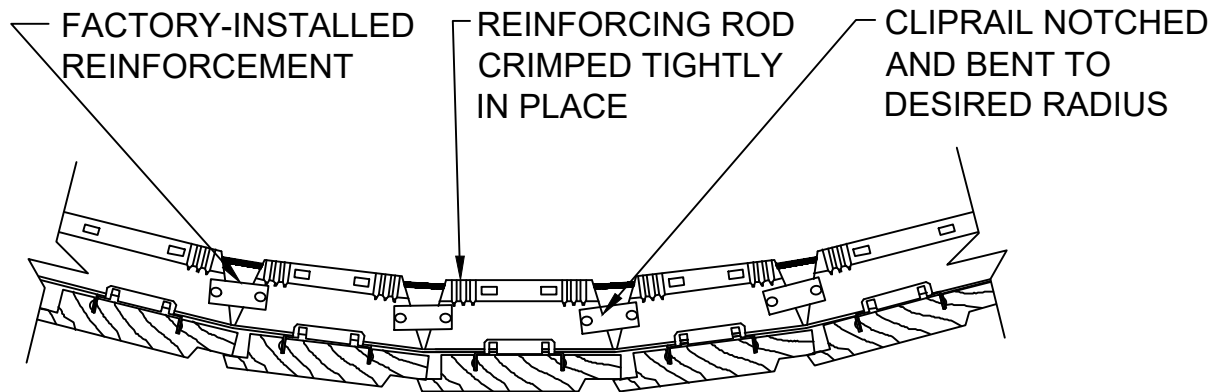
MAR/14/2019

TA

LCC4N011



CONCAVE RADIUS



CONVEX RADIUS

NOTE: ONLY AVAILABLE IN LARGE RADIUS CEILINGS



RULON INTERNATIONAL
2000 Ring Way
St. Augustine, FL 32092

(904) 584-1400
info @ rulonco.com

www.rulonco.com

PROJECT:

ISSUE DATE:

DRAWN BY:

PROJECT NUMBER:

CAP

TITLE: Cliprail Radius Detail -
Linear Closed Style

REVISION DATE:

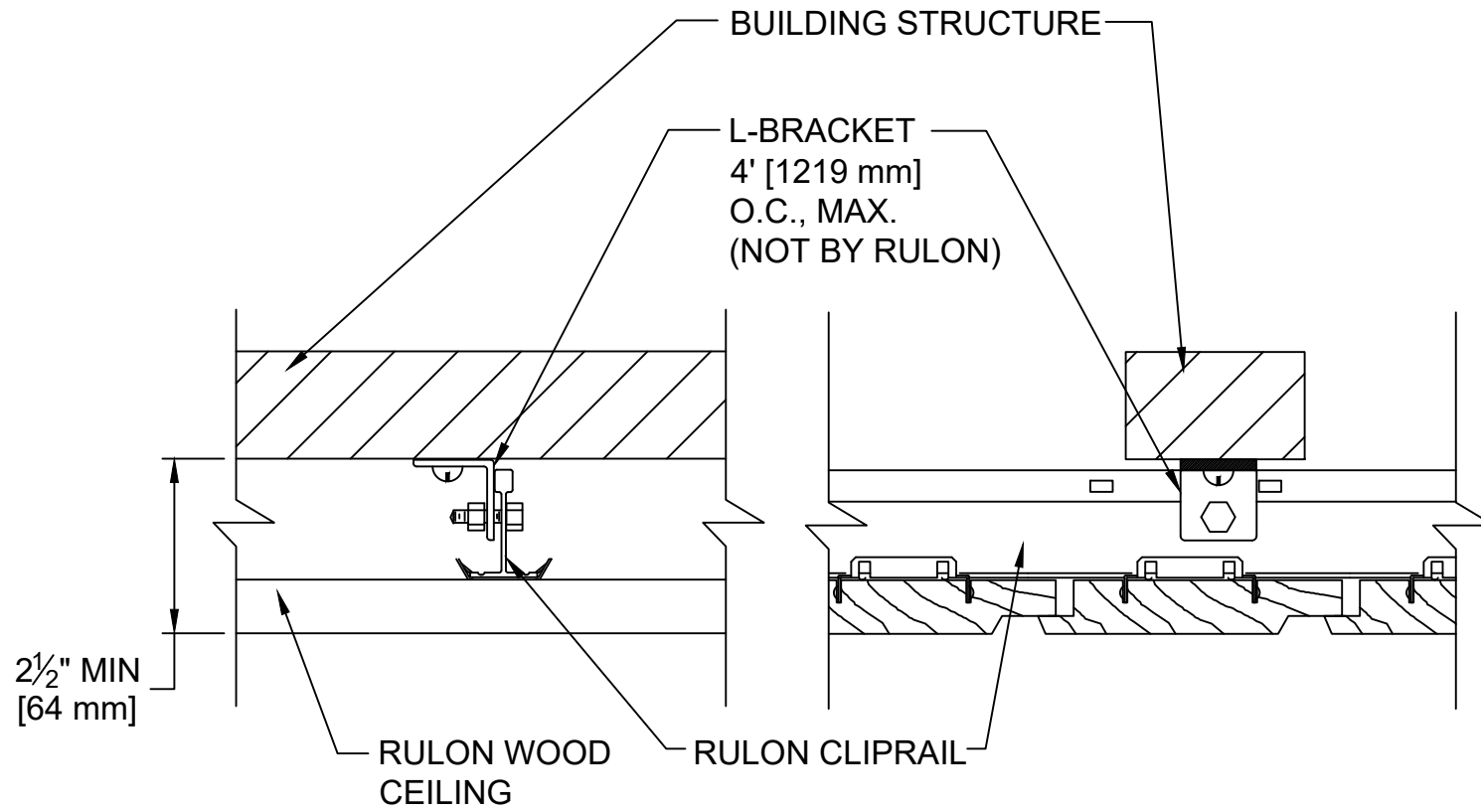
CHECKED BY:

DRAWING NUMBER:

SEP/17/2021

TA

LCC4N013



SECTION THROUGH CLIPRAIL

SECTION THROUGH BOARDS



RULON INTERNATIONAL
 2000 Ring Way
 St. Augustine, FL 32092

(904) 584-1400
 info @ rulonco.com

www.rulonco.com

PROJECT:

TITLE:

Direct Mounting Detail - Ceiling -
 L-Bracket Method - Linear Closed Style

ISSUE DATE:

REVISION DATE:

MAR/14/2019

DRAWN BY:

CAP

CHECKED BY:

TDA

PROJECT NUMBER:

DRAWING NUMBER:

LCC4N015