



RULON INTERNATIONAL

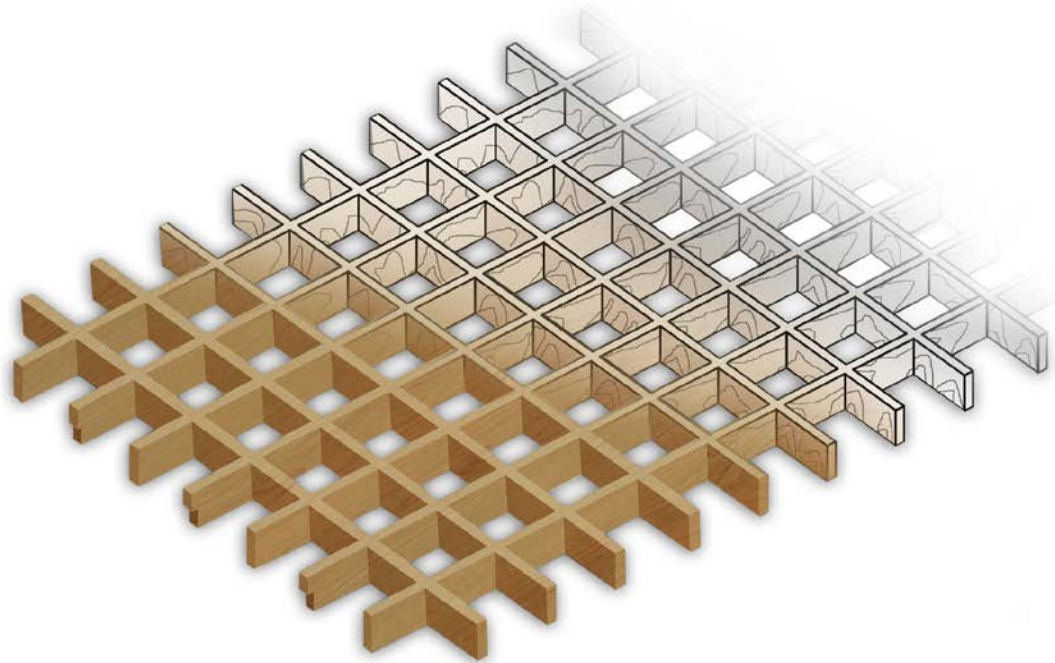
CUBES DATA SHEET

SYSTEM: CUBES

PROFILE: CONTINUOUS



Overview



SYSTEM

Continuous Cubes are cell-like assembled panels that fit into a wood grid system. Wood segments are suspended perpendicular to each other, interlocking vertically to create the cell-like structure. Continuous Cube panels are supported by a wood grid manufactured and supplied by Rulon from wood main runners and cross tees that match the cube panels in color and profile. The 2' x 4' panels drop into the wood grid assembly, creating a monolithic ceiling appearance. Standard cell sizes are available in 3", 4", 6" and 8" modules. Standard cell depths are 2", 3" and 4". Wood segments are 3/4" thick. Continuous Cubes are available in solid wood or veneer.



RULON INTERNATIONAL

CUBES DATA SHEET

SYSTEM: CUBES

PROFILE: CONTINUOUS



Technical Data

VARIABLES



ENGINEERING CONSIDERATIONS

Continuous Cubes are manufactured at Rulon's plant in St. Augustine, FL. All shop drawings and coordination details are produced by Rulon's engineering staff.



ACCESSIBILITY

Continuous Cubes are a fully-accessible Rulon ceiling system. Wood mains and crosses are suspended using screw eyes and #12 Gauge hanger wire. Continuous Cube panels are drop-in.



ACOUSTICS

Continuous Cubes are manufactured with or without fabric backing, allowing sound to pass through the space between wood slats to the plenum space beyond. Continuous Cubes are acoustically transparent.



SUSTAINABILITY

Continuous Cubes may contribute as required to the following LEED v4 credits: [MR BPD&O – Sourcing of Raw Materials](#), [MR BPD&O – Material Ingredients](#), [EQ Low-Emitting Materials](#), [EQ Minimum Acoustic Performance](#)



FIRE PERFORMANCE

Continuous Cubes can be treated to meet **Class A** requirements as per ASTM E-84. Solid wood is treated with a finish additive; veneers are applied to an FR (Fire Rated) core (typically MDF or Particleboard)..



SEISMIC

Continuous Cubes do not meet seismic code compliance as the grid is manufactured from wood segments. Local code requirements should be consulted in order to determine available options.



INTEGRATIONS

Continuous Cubes can be easily trimmed in-field to accommodate MEP integrations. Touch-up finish is supplied to seal cut sections. In-factory cutouts can be achieved with dedicated coordination and in conjunction with the [Integrated Lighting^D](#) program at Rulon.



GENERAL COSTING

Continuous Cubes are typically an inexpensive system depending on the material and manufacturing requirements. Continuous Cubes qualify as **\$\$\$\$** on the general costing scale. Local reps should be contacted in order to obtain a project-specific budget.



RULON INTERNATIONAL

CUBES DATA SHEET

SYSTEM: CUBES

PROFILE: CONTINUOUS



Specification

COMPONENTS

HANGERS

#12- gauge wire hangers (contractor-supplied).

SUSPENSION SYSTEM

Continuous Cubes are supported by wooden main and cross rails provided by Rulon as part of the system. The wooden rails are formed into a grid, into which the drop-in panels are inserted. The rails match the species, finish and size of the main and cross rails.

PROFILES

Continuous Cubes are manufactured in 2'x 4' sections and come in standard cell sizes of 3" [76 mm], 4" [102 mm], and 6" [152 mm]. Standard wood members are 3/4" [19 mm] thick by 2" [51 mm], 3" [76 mm], or 4" [102 mm] high. Custom sizes are available.

PERIMETER TRIMS

Ceiling termination at a wall or soffit is accomplished by using an unnotched blade and blocking/furring by the contractor.

WOOD SELECTIONS

WOOD SPECIES

Continuous Cubes may be specified in a variety of solid or veneer wood types. Current standard wood species are: Ash, Maple, Red Oak, White Oak, Beech, Poplar, and Cherry. **Thermally Modified¹** wood species are also available. Premium veneers and non-wood laminates are available.

TEXTURES

The standard surface texture is smooth-sawn. Faces are sanded.

FINISHING & COMPONENTS

WOOD FINISHES

The standard finish is satin clear. Custom stains, opaque or semi-transparent colors are also available. All finishes are water based, low VOC-emitting, and do not contain solvents.

SHIPPING & STORAGE

SHIPPING

Continuous Cubes are shipped in shrink wrap packaging, with no more than two (2) panels per bundle. Continuous Cube backs are placed together to prevent marring of faces.

STORAGE

Continuous Cubes shall be stored flat and level, in a fully enclosed space. For a minimum of seventy-two (72) hours immediately prior to ceiling installation, the packaging shall be opened and the cubes shall be stored in the room



RULON INTERNATIONAL

CUBES DATA SHEET

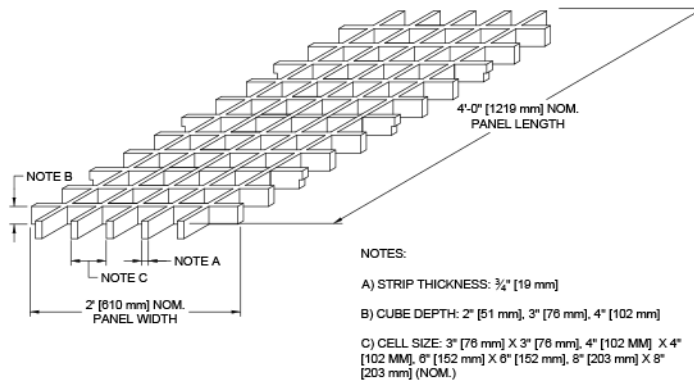
SYSTEM: CUBES

PROFILE: CONTINUOUS

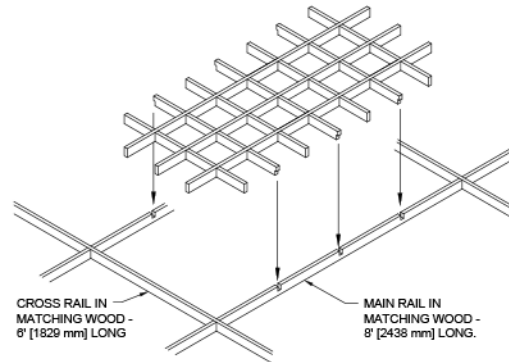


in which they will be installed. The temperature and humidity of the room shall closely approximate those conditions that will exist when the building is occupied. Cubes must be stored off the floor.

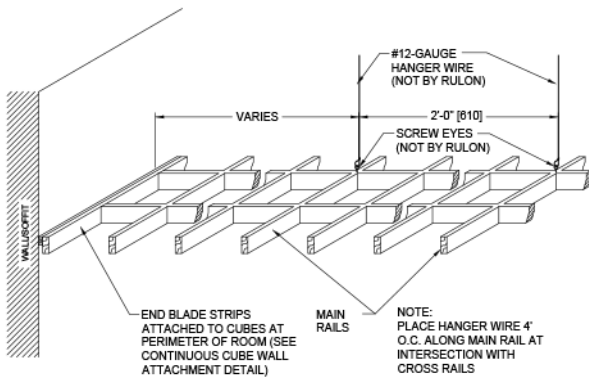
Typical Details



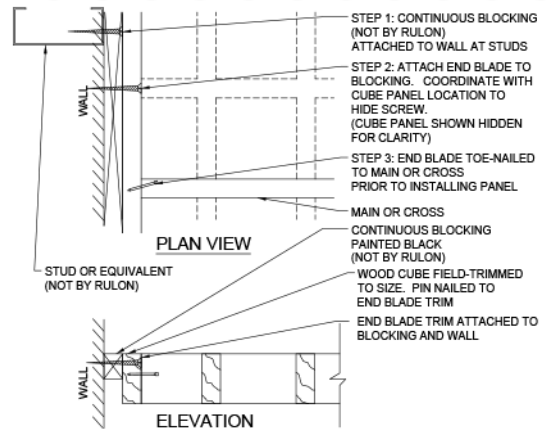
TYPICAL MODULE



TYPICAL INSTALLATION



SUSPENSION



PERIMETER CONDITIONS



RULON INTERNATIONAL

CUBES DATA SHEET

SYSTEM: CUBES

PROFILE: CONTINUOUS



Notes

^A Not used.

^B Not used.

^C Not used.

^D The Integrated Lighting program at Rulon is in partnership with GE Lighting and is an effort to coordinate MEPs more effectively and provide for a more streamlined process of integration. In practice, this effort begins with factory cutouts to accommodate light fixtures.

^E Not used.

^F Not used.

^G Not used.

^H Not used.

^I Not used.

^J Thermally modified wood has been altered by a controlled process called pyrolysis which induces chemical changes to the cellular structure of the cell wall components of the wood material through heat to increase durability, shrink/swell factor, and biological resistance.

^K Not used.

^L Not used.