



RULON INTERNATIONAL

FLAT VENEER PANEL DATA SHEET

SYSTEM: FVP

PROFILE: ANY



Overview



SYSTEM

Flat Veneer Panels are manufactured in sizes up to 4' [1219 mm] by 10' [3048 mm] with premium grade veneer adhered to a wood substrate. Panels can be optimized to both meet project requirements and limit waste, edgebanded, finished and shipped to the jobsite ready to install or manufactured in full sheets with supplied loose edgebanding.



RULON INTERNATIONAL

FLAT VENEER PANEL DATA SHEET

SYSTEM: FVP

PROFILE: ANY



Technical Data

VARIABLES



ENGINEERING CONSIDERATIONS

Flat Veneer Panels are manufactured at Rulon's plant in St. Augustine, FL. All shop drawings and coordination details are produced by Rulon's engineering staff.



ACCESSIBILITY

Flat Veneer Panels are a fully-accessible Rulon ceiling system unless direct-screw attached. Panels are suspended from grid by **C-Hangers^A** or **Torsion Springs & Saddle Clips^B**. Ceiling panels can also be manufactured with a variety of edge conditions including tegular, lay-in, and side slot. Wall panels are attached with **Z-Clips^E**.



ACOUSTICS

Flat Veneer Panels are manufactured with or without p-gasket or fabric infill at reveals, allowing sound to pass through the space between panels to the plenum space beyond. Flat Veneer Panels are acoustically reflective.



SUSTAINABILITY

Flat Veneer Panels may contribute as required to the following LEED v4 credits: **MR BPD&O – Sourcing of Raw Materials**, **MR BPD&O – Material Ingredients**, **EQ Low-Emitting Materials**, **EQ Minimum Acoustic Performance**



FIRE PERFORMANCE

Flat Veneer Panels can be treated to meet **Class A** requirements as per ASTM E-84. Veneers are applied to an FR core (MDF or Particleboard).



SEISMIC

Flat Veneer Panels meet seismic code compliance via direct screw attachment to heavy duty grid. Local code requirements should be consulted in order to determine additional requirements.



INTEGRATIONS

Flat Veneer Panels can be easily trimmed in-field to accommodate MEP integrations. Touch-up finish and edgebanding is supplied to veneer and seal cut sections. In-factory cutouts can be achieved with dedicated coordination and in conjunction with the **Integrated Lighting^D** program at Rulon.



GENERAL COSTING

Flat Veneer Panels are typically an inexpensive system depending on the material and manufacturing requirements. Flat Veneer Panels qualify as **\$\$\$\$** on the general costing scale. Local reps should be contacted in order to obtain a project-specific budget.



RULON INTERNATIONAL

FLAT VENEER PANEL DATA SHEET

SYSTEM: FVP

PROFILE: ANY



Specification

COMPONENTS

HANGERS

#12- gauge wire hangers (contractor-supplied).

SUSPENSION SYSTEM

Ceiling Panels should be suspended using standard 15/16" [24 mm] heavy duty grid (contractor-supplied). Tegular or Lay-in ceilings may be suspended using standard 9/16" [14 mm] medium duty or 15/16" [24 mm] heavy duty grid (contractor-supplied). Mains for 15/16" [24 mm] heavy duty grid shall be a max of 2' [610 mm] on center.

ATTACHMENT

Ceiling Panels may be suspended from grid using **C-Hangers**^A (see drawing AXXX0011) or **Torsion Springs & Saddle Clips**^B (see drawing AXXX0012). Panels may also be directly screwed to grid from above (see drawing AXXX0015). Wall Panels may be attached by **Z-Clips**^E (see drawing AXXX0013). When supplied with tongue and groove, panels may be direct nailed through the tongue into furring supplied by the contractor (see drawing D-272). Ceiling panels can also be manufactured with a variety of edge conditions including tegular, lay-in, and side slot (see drawing AXXX0016).

SIZES

Panels are made from premium grade veneers adhered to a wood substrate (typically MDF or Particleboard). Face veneer is finished to customer requirements. Panels may be manufactured in sizes up to 4' [1219 mm] by 10' [3048 mm].

PERIMETER TRIMS

Ceiling termination at a wall or soffit is accomplished using a reveal or contractor supplied angle.

WOOD SELECTIONS

WOOD SPECIES

Flat Veneer Panels may be specified in a variety of veneer species. Current standard wood species are: Ash, Maple, Red Oak, White Oak, Beech, Poplar, and Cherry. Premium veneers and non-wood laminates are available.

TEXTURES

The standard surface texture is smooth-sawn. Faces are sanded.

FINISHING & COMPONENTS

WOOD FINISHES

The standard finish is satin clear. Custom stains, opaque or semi-transparent colors are also available. All finishes are water based, low VOC-emitting, and do not contain solvents.



RULON INTERNATIONAL

FLAT VENEER PANEL DATA SHEET

SYSTEM: FVP

PROFILE: ANY



SHIPPING & STORAGE

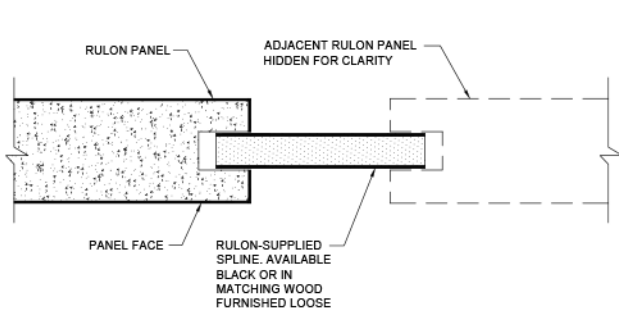
SHIPPING

Flat Veneer Panels are shipped in shrink wrap packaging, with no more than two (2) panels per bundle. Panel backs are placed together to prevent marring of faces.

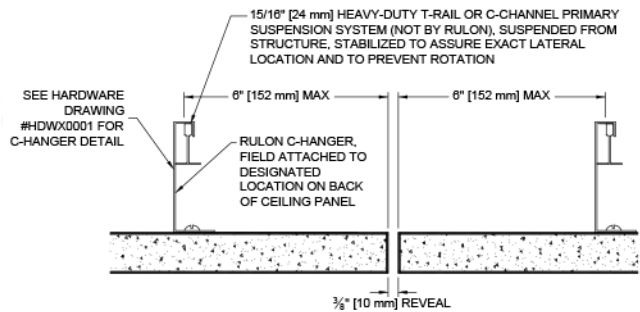
STORAGE

Flat Veneer Panels shall be stored flat and level, in a fully enclosed space. For a minimum of seventy-two (72) hours immediately prior to ceiling installation, the packaging shall be opened and the panels shall be stored in the room in which they will be installed. The temperature and humidity of the room shall closely approximate those conditions that will exist when the building is occupied. Panels must be stored off the floor.

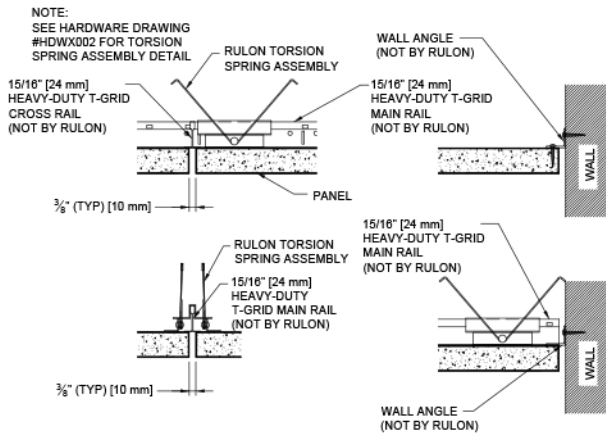
Typical Details



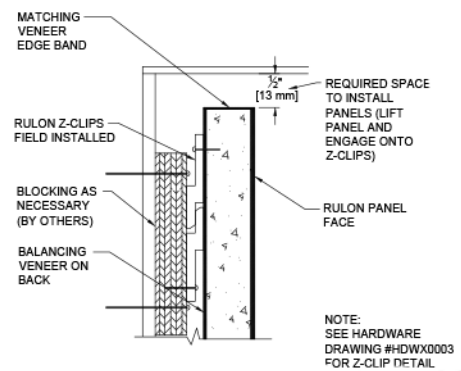
SIDE SPLINE (WALLS ONLY)



C-HANGERS



TORSION SPRINGS



Z-CLIPS



RULON INTERNATIONAL

FLAT VENEER PANEL DATA SHEET

SYSTEM: FVP

PROFILE: ANY



Notes

- ^A C-Hangers are suspension hangers that are direct-screwed to the panel and hang over the heavy duty-grid. The clips are made of spring-steel with phosphate pre-treatment and corrosion-resistant coating.
- ^B Torsion Springs and Saddle Clips are two parts of a suspension system in which the torsion spring is direct-screwed to the panel and compressed to attach to the saddle clip that is fitted over the heavy duty-grid. The clips are made of spring-steel with phosphate pre-treatment and corrosion-resistant coating.
- ^C Not used.
- ^D The Integrated Lighting program at Rulon is in partnership with GE Lighting and is an effort to coordinate MEPs more effectively and provide for a more streamlined process of integration. In practice, this effort begins with factory cutouts to accommodate light fixtures.
- ^E Z-Clips are male/female aluminum attachment clips, similar to a French cleat but with a thinner profile, used to hang wood wall panels on furring strips.
- ^F Not used.
- ^G Not used.
- ^H Not used.
- ^I Not used.
- ^J Not used.
- ^K Not used.
- ^L Not used.